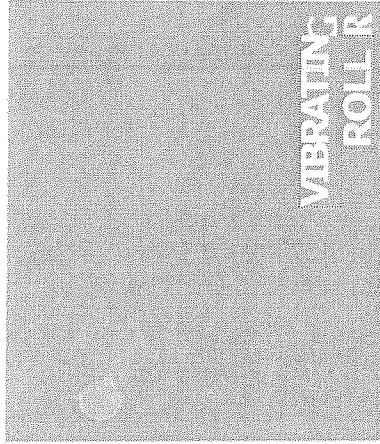


Read this handbook thoroughly and understand the whole information contained before trying to operate, inspect and service your machine!

**OPERATING
&
MAINTENANCE
INSTRUCTIONS**



MODEL

CV550 Series
CV550D CV550DV
CV550T

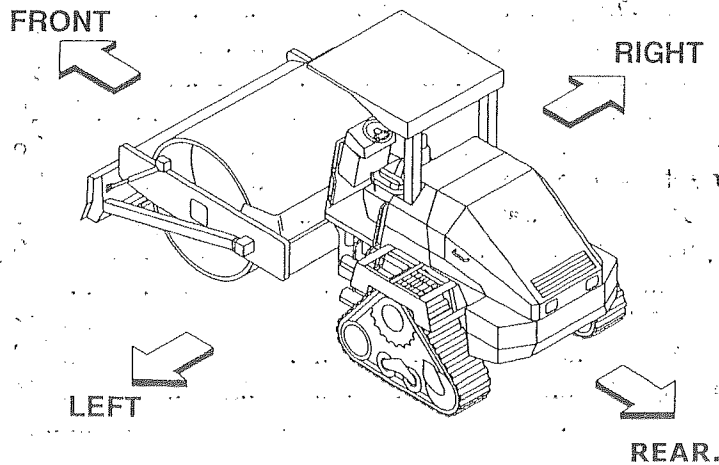
From CV550D VSV8D - 10101
CV550DV VSV8D - 10101
CV550T --> VSV8T - 10101

This operator's manual serves as a guide for the use of your Sakai CV550 Series Vibrating Roller for those who are new to the machine, and also for the people who have experience in using the Machine and want to refresh their knowledge for the machine.

Read this manual thoroughly and try to fully understand the information before operating your machine. Keep this handbook at hand whenever you do your work.

The main subjects of this manual are:

(1) Basic precautions for safety, (2) Operation, (3) Daily maintenance and (4) Specifications. For operation and maintenance of the engine, refer to the Engine Instruction Manual furnished separately. Descriptions in this manual can differ from the machine instructions of your machine due to the results of the investigation and improvement in its design. If you have any inquiry regarding your Machine or this manual, contact our distributors.



PREFACE	
MACHINE AND ENGINE IDENTIFICATION NUMBERS	1
SAFETY NOTICES.....	2
1 BASIC PRECAUTIONS FOR SAFETY	4
1.1 General Precautions	4
1.2 Preparation for Safe Operation	6
1.3 Before Starting the Engine	7
1.4 After Starting the Engine.....	8
1.5 During operation.....	8
1.6 Loading and Unloading.....	10
1.7 Transportation	11.
1.8 Handling the Battery... ..	11
1.9 Towing.....	12
1.10 Before Servicing.....	13
1.11 During Servicing	14
1.12 Safety Decals.....	16
2. OPERATION.....	18
2.1 Instruments and Controls	18
2.1.1 Operator's station	18
2.1.2 Gauges, indicator lamps and warning lamps.....	19
2.1.3 Switches.....	21
2.1.4 Operating levers / pedals.....	24
2.1.5 Unloader switch.....	25
2.1.6 Fuse box	26
2.2 Handling and Adjustments.....	26
2.2.1 Seat adjustment	26
2.2.2 Scraper adjustment and replacement	27
2.2.3 Disengaging the brake when towing	28
2.2.4 Pass counter (option)	30
2.3 Operation	32
2.3.1 Before-starting inspection	32
2.3.2 Starting the engine	33
2.3.3 After starting the engine	34
2.3.4 Traveling.....	35
2.3.5 Stopping / Parking	36
2.3.6 Stopping the engine	37
2.3.7 Check after stopping the engine.....	37
2.4 Vibratory Operation.....	38

2.5 Precautions for Working	39	
2.5.1 Compaction operation	39	
2.5.2 When going downhill	39	
2.5.3 On a slope.....	39	
2.6 Applicable Jobs	40	
2.7 After Operation.....	41	
2.8 Loading and Unloading	41	
2.8.1 Use of a trailer equipped with a winch.....	41	
2.8.2 Self-propelling	42	
2.9 After Loading the Machine.....	43	
2.10 Transportation	43	43
2.11 Operation in Cold Weather	43	
2.11.1 Fuel oil and grease	43	
2.11.2 Coolant	44	
2.11.3 Battery	45	
2.12 When the Cold Season is Over	46	
2.13 For a Long Storage Period	46	
2.14 During the Storage Period	46	
2.15 When the Battery. Has Discharged	47	
2.15.1 Connection and disconnection of booster cables	47	
1		
3. PERIODICAL MAINTENANCE	48	
3.1 Precautions	48	
3.1.1 Lifting the machine on a hoist.....	50	
3.2 Walk-around Checking.....	51	
3.3 Periodical Maintenance Points	52	
3.4 Maintenance Procedure	54	
(1) Every 10 hours or daily	54	
(2) Every 50 hours.....	55	55
(3) Every 250 hours.....	57	
(4) Every 500 hours.....	59	
(5) Every 1000 hours.....	59	59
(6) As required.....	61	
3.5 Adding Water and Lubricants.....	63	
3.6 Electric Wiring Diagram	65	
4. SPECIFICATIONS	67	

E T J

C 7 - H - 7 ----- r - 1 ----- - 1 - 1 r

C 1 1 - 1 D U

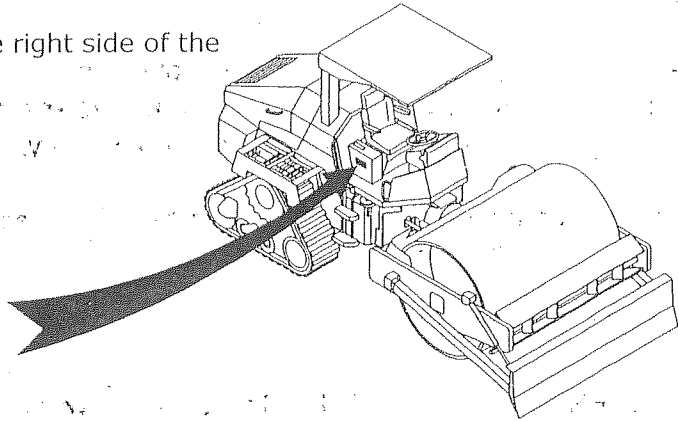
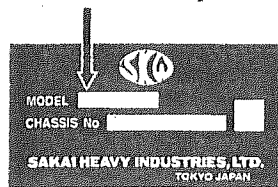
MACHINE AND ENGINE IDENTIFICATION NUMBERS

MACHINE AND ENGINE IDENTIFICATION NUMBERS

When ordering parts or making inquiries about your machine, the following information is requested:

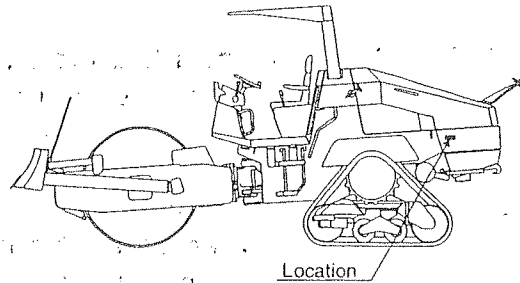
(1) Machine model

Indicated on the nameplate of the right side of the operator's seat.

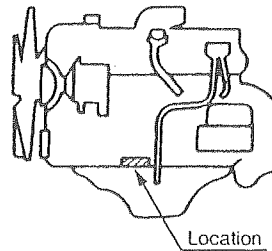


(2) Machine serial number

CV550D * . v s b ^L 00000
CV550DV c VSV8D **411000** CV550T
E > VSV8T-00000



(3) Engine serial number



SAFETY NOTICES

For the safe use of your machine, correct handling and periodical maintenance are of utmost importance. Thoroughly read the safety precautions described in this manual. Do not attempt to operate and maintain your machine until you gain a full understanding of these safety statements.

This manual covers the proper and safe method of driving and handling of this machine for its intended use. When this machine is used a manner, other than that covered in this manual, you must assume responsibility for your own personal safety.

In this manual and on the machine, you will find safety notices. Each safety notice starts with a signal word as shown below:

A **DANGER** Denotes that there is an extreme hazard. If you fail to take proper precautions, it is highly likely that you could be killed or seriously injured (The color of the symbol **A** is red).

A **WARNING** Denotes that there is a hazard. If you fail to take proper precautions, you could be killed or seriously injured (Symbol **A** is orange).

A **CAUTION** Calls attention to safety practices. If you fail to take proper precautions, you could be injured or cause damage to the machine (Symbol **A** is yellow).

It is almost impossible for the safety notices in this manual and or the-machine to cover all the potential dangers. Keep alert to possible dangers not mentioned in this manual and on the decales.

A WARNING

**Do not operate your machine before you read its operator's manual thoroughly.
Incorrect operation can kill or cause injury.
It is your responsibility to operate the machine safely.**

*Non-approved 'modifications can pose safety-related problems. Before making any modifications, consult your distributor. For an injury or damage to the machine caused by non-approved modifications, Sakai accepts no responsibility.

.7. * Basic precautions for safe operation of your machine are ^{discussed} beginning on page 4:

* To operate and work with your machine, you must be

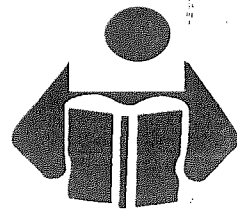
1. BASIC PRECAUTIONS FOR SAFETY

1. BASIC PRECAUTIONS FOR SAFETY

1.1 General Precautions

■ **Read thoroughly the operator's manual.**

- Understand the functions of the controls and gauges. Familiarize yourself with their location and how to operate them. Understand the meaning of all the symbols.

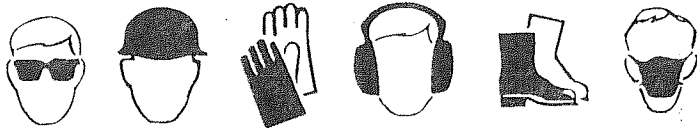


■ **Obey the worksite rules.**

- Follow the worksite rules such as matters forbidden or to be attended to, and working procedures.

■ **Wear protective clothing to suit the work.**

- Wear clothing, safety shoes and hard hat to suit your work.
- Do not wear clothing and accessories that tend to get caught in the controls or protruded portions of the machine. Do not wear oily clothing.
- According to the type of jobs, wear safety goggles or mask.



■ **Know the work area in advance.**

- Know the terrain, geology and conditions of the road surface at the worksite. Start working after securing safety such as stationing a guardsman or putting up barriers where there is a risk of falling of the machine or collapse of shoulder.

■ **Provide against an accident.**

- Decide in advance the means of communication in an emergency. Know the location and use of an extinguisher and first-aid kit.

■ **Know the capability of the machine.**

- Thoroughly understand the performance of your machine and correctly operate the machine to meet the requirements of the job site. Operating the machine beyond its capabilities may lead to an accident. Use your machine within its capability.

A WARNING: Negligence of these instructions can lead to accidents.

1. BASIC PRECAUTIONS FOR SAFETY

■ **Do not use a machine which has not been serviced correctly at regular intervals.**

- Before working, perform necessary inspections. Start operation only after making certain the machine is in good operating condition. If found to be abnormal, report to the responsible person and have the fault corrected. Operate the machine after making sure that it is safe to operate.

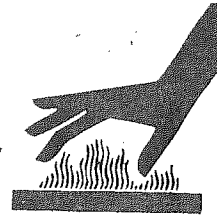
■ **Do not allow anyone to enter the work area except for authorized personnel.**

- Always conduct the work paying attention to the workers around the machine.



■ **Be careful of hot parts.**

- After your machine has operated for some time, the coolant, engine oil and hydraulic fluid will become hot and the pressure will build up. If, in this state, you try to remove the filler caps, drain the oil or replace the filters, you can get burned. Perform this work in accordance with the correct procedures with the machine cooled down.
- To remove the radiator cap, slowly loosen the cap to relieve the pressure with the engine shut down and the coolant cooled down. (For the radiator cap, with a lever, lift the lever to release the trapped pressure.)
- When removing the filler cap on the hydraulic tank, release the trapped pressure by turning it out slowly to prevent the oil from gushing out.
- Do not touch the muffler while the engine is running or immediately after it has been shut down. You can get burned.

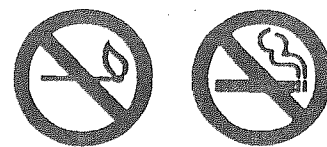


■ **Be careful with fire.**

- The fuel, oil, and anti-freeze will catch fire if open flames or ignition sources are used close to them. Particularly, the fuel is highly flammable.



- Do not smoke or use a match or cigarette lighter close to inflammables (combustibles).
- When refueling, stop the engine and do not smoke.
- The filler caps of the fuel and oil tanks must be kept tight.



A WARNING: Negligence of these instructions can lead to accidents.

1. BASIC PRECAUTIONS FOR SAFETY

■ Mount on or dismount from your machine after it has come to a complete stop.

- For getting on and off, face the machine and use the handrail and step.
- Do not jump on or off a machine, particularly when it is moving.

■ To handle the hydraulic fluid.

- Wear safety goggles to protect your eyes from contact with hydraulic fluid. It can irritate your eyes.

If the fluid contacts your eyes, flush with clean water for 15 minutes and get medical aid.

- The fluid can also irritate your skin. When handling it, wear rubber gloves to avoid contact with it. In case of skin contact, wash with soap and water.
- Be careful not to swallow the fluid. It can cause diarrhea and emesis.

If swallowed, do not try to vomit. Get medical help immediately.



1.2 Preparation for Safe Operation

■ Clean the step, operator's station and floor board.

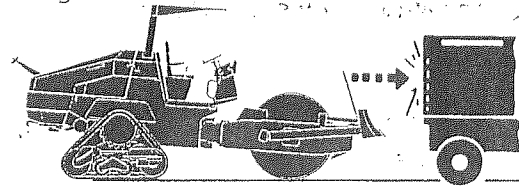
- Do not place parts, tools or unnecessary articles on the step, operator's station and floor board.
- Keep the step, floor board, controls and handholds free from muds, oil, ice or water, as they can cause slippage. Repair them if found to be damaged. Tighten loose bolts.
- Keep your boot soles free of oil or muds. They can slip, leading to an accident.

■ Inspect your machine before operation

- Check your machine for damage such as cracks and deformation. If found to be abnormal, operate the machine after taking a proper measure to secure safety.
- Check the level of fluids (fuel, engine oil, coolant, anti-freeze and hydraulic oil). Add as necessary.
- Check the area where the machine has parked for signs of leakage of oil, fuel and water. If any leakage is noticeable, determine the cause and make corrections immediately. -•

A WARNING: Negligence of these instructions can lead to accidents.

- Know the stopping distance.
- When traveling on a road, bear in mind the stopping distance. Avoid excessive speed, and abrupt starting and stopping, and moving in a zigzag direction.



1.3 Before Starting the Engine

- **Adjust the operator's seat to your most effective operating position.**
 - Sit on the operator's seat. Adjust the seat so that your back will make contact with the seat back when the brake pedal is depressed to the full extent. Check to be sure that the brake pedal can be fully depressed without difficulty when you twist your body for reverse run.

- **Secure good visibility (with cabin)**
 - Keep the windowpane clean.
 - Lock the windows and doors no matter whether they are open or closed.
 - Do not leave the doors half-closed.

- **Secure forward and backward visibilities.**
 - Adjust the rear view mirrors and under mirrors for good visibility. If dirty, clean them. If damaged, replace.

- **Check that the horn, lamps and gauges work correctly.**

- **Before starting, make certain that each lever is in the neutral position and the parking brake is applied.**

- **When starting, sound the horn.**
 - Before starting the engine, Make sure there is no one in the immediate vicinity and there are no obstructions , around the machine.

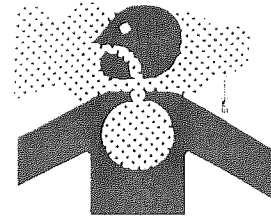


A WARNING: Negligence of these instructions can lead to accidents.

1. BASIC PRECAUTIONS FOR SAFETY

■ Pay attention to ventilation.

- Exhaust fumes are dangerous if breathed in. When starting the engine in an enclosed area, provide good ventilation with windows and doors opened.



■ Do not stand close to the exhaust gas pipe opening.

- Exhaust fumes are noxious if breathed in.

1.4 After Starting the Engine

■ Secure safety around the machine.

- Ensure that the area around the machine is clear of personnel and obstructions. Pay particular attention to dead spaces. Before starting, sound the horn.



■ Warm up the Engine

- Do not put your machine into motion immediately after the engine has started, let it idle for several minutes until it is at operating temperature.

■ Have a trial run.

- Make a test run in a safe place to check that there are no abnormal signs. If found to be abnormal, rectify the fault before traveling again.
- Listen for unusual sounds, and check for abnormal temperature rise. If abnormal, park the machine in a safe location and find the source of trouble before operating.

1.5 During Operation

■ No other person but the operator

- This machine is a one-man roller. Do not allow anyone to get on. Only the operator is allowed on this machine while it is running or in operation. Radios are not permitted:4

■ Before mounting, be sure areas around the machine are safe.

- Before getting on the machine, make certain that there are no obstacles around the machine and no workers under it. If some workers are present or close to the machine, tell them that the machine is about to move, warning them to stay away from it.

A WARNING: Negligence of these instructions can lead to accidents:

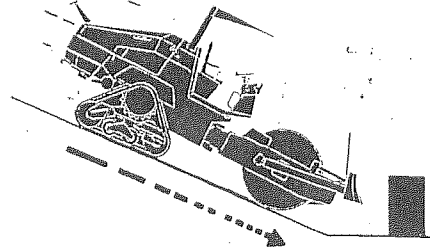
1. BASIC PRECAUTIONS FOR SAFETY

■ **Do not try to get on or off a moving machine.**

- Get on or off the machine after making sure it has come to a complete stop.

■ **To go uphill or downhill, run at low speeds. Do not attempt to shift speeds while traveling on a grade.**

- Shifting speeds, on a slope can cause unexpected running down the slope. :
- Going down hill at speeds other than low range can cause the machine to run down violently.



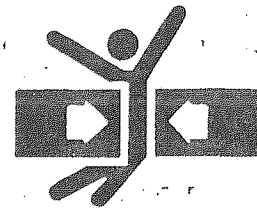
■ **Refrain from inattentive driving.**

- Inattentive driving or driving relying on guess work can cause an accident. Use extreme care for workers present in the path of the roller or around it. In case of danger, stop and sound the horn, and proceed when the area is clear of personnel or obstructions.

■ **When changing the direction of travel, secure the safety on the path in the travel direction.**

■ **Keep everyone away from the pinch points.**

- When making turns, do not allow anyone to come close to the pinch point.



■ **At night, carefully drive the machine.**

- Nighttime driving tends to frustrate the sense of distance. Carefully drive the machine at a speed suited to lighting. Keep the headlamps, and flood lamps lighted. If necessary,, provide extra lighting in the work area.

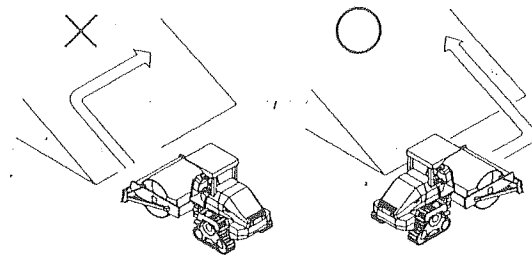
■ **Repair as soon as possible if found to be defective.**

- If the machine is found to be faulty, stop the machine and repair. Do not operate the machine until the problem is corrected. When any warning lamp indicates faulty operation, inspect the machine after moving it to the nearest safe location.

A WARNING: Negligence of these instructions can lead to accidents.

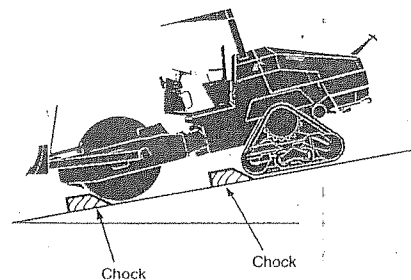
1. BASIC PRECAUTIONS FOR SAFETY

- Do not operate the machine except from the operator's seat. Do not drive in a standing posture.
- While making turns, do not run at abnormally high speed and do not turn the steering wheel abruptly and sharply.
- For the traveling on structures such as a bridge, make certain that they can support your machine. Before traveling on the structure, you must know the load capacity of the structure and the load weight of the machine you are operating to insure safe travel across the structure.
- Do not make turns on a slope and do not travel across sidehill. If necessary to do so, go down straight along the slope to the flat ground, move sideways and go up straight to the destination.



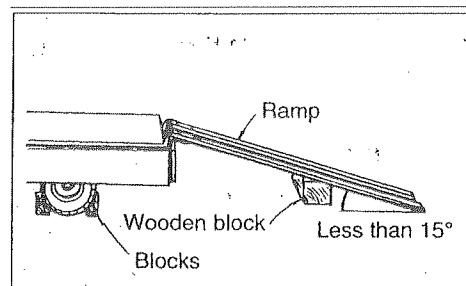
■ **When parking.**

- Select level and hard ground. If necessary to park on a slope, block the front of the drums on the downside of the slope.
- When required to park on the public road, provide necessary markings such as flag, barriers and illumination. However, be sure they do not obstruct traffic.
- When getting off the machine, stop the engine and



1.6 Loading and unloading

- Loading and unloading can accompany any danger. Use extreme care.
- Select level and hard ground leaving a sufficient distance from the shoulder.
- Use sturdy ramps with proper width, length and thickness which allow safe loading and unloading. If they deflect considerably under load, apply wooden blocks to reinforce the



A WARNING: Negligence of these instructions
instructions can lead to accidents.

1. BASIC PRECAUTIONS FOR SAFETY

- To prevent your machine from crosswise slippage, keep the ramps free from oil, mud, debris, etc. The drum must also be free from extraneous matter that can cause slippage.
- Do not steer your machine on the ramps. If the machine is facing in the wrong direction, allow it to dismount from the ramps, correct the direction and try again.
- Do not use kinked, twisted or damaged wireropes for crane or winch operation. Use ones with ample strength.
- When loading is complete, fix the machine with wooden blocks placed under the drums and chains fastened to the machine.

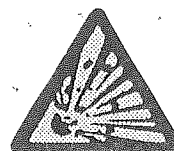
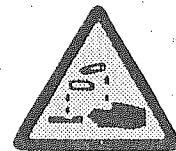
1.7 Transportation

- Follow required regulations.
- Select a transporting route according to the overall width; overall height and gross weight of the trailer with the roller loaded.

1.8 Handling the Battery

■ When handling the battery:

- Battery electrolyte contains sulphuric acid. It will destroy clothing and skin. If it touches your clothing or skin, flush with large quantities of water.
- In case of eye contact, flush with clean water and seek medical help.
- If swallowed, drink large amount of water, milk, beaten egg or vegetable oil, and get medical help.
- Wear safety goggles when handling the battery. Wear safety goggles, full face shield, rubber gloves and rubber apron when adding fluids to the battery.
- The battery generates flammable gases that can cause an explosion. Do not smoke close to the battery. Keep the battery away from flames, sparks and ignition sources.

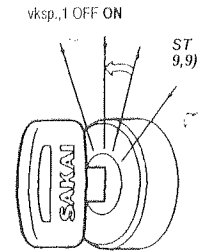


**Battery posts, terminals, and related accessories contain lead and lead compounds, chemicals known to the State of California to cause cancer and reproductive harm.
Wash hand after handling.**

A WARNING: Negligence of these instructions can lead to accidents.

1. BASIC PRECAUTIONS FOR SAFETY

- Inspect or handle the battery with the engine shut down and the starter key in the OFF position.
- Keep metallic items such as tools away from the battery terminals.
- Loose terminals can cause sparks leading to an explosion. Secure the terminals tightly.



■ **Jump-starting the-engine.**

- Wear safety goggles when jump-starting the machine.
- When starting from another machine, do not allow the two machines to make contact with each other.
- When connecting the battery cables, start with the positive terminal. For disconnection, start with the negative one.
- Do not allow a tool to bridge between the positive terminal and machine body. This can generate dangerous sparks.
- Do not connect the booster cable to wrong terminal. NEVER connect the positive terminal to the negative.
- Final connection to the engine block of the disabled machine can cause sparks. The connecting point should be as far as possible from the battery.



1.9 Towing

- To tow the machine, use wire ropes with ample strength.
- Do not perform towing on a slope.
- Do not use towing ropes twisted, kinked or damaged.
- Do not stride towing cables.
- Keep everyone away from the space between the machine and the towing vehicle when connecting the two.
- Align the connecting portions of the machine and towing vehicle straight when coupling the machine.

A WARNING: Negligence of these instructions can lead to accidents.

1. BASIC PRECAUTIONS FOR SAFETY

1.10 Before Servicing

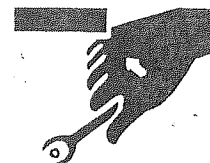
■ **Attach warning tags when servicing the machine.**

- Serious accidents can occur if the machine is unexpectedly started or controls carelessly touched by an unauthorized person.
- Attach a warning tag at a clearly visible location in the operator's station and insure the key has been removed from the ignition switch.



■ **Use proper tools.**

- It is very dangerous to use damaged or deteriorated tools or to use tools for other purposes than intended. Use correct tools for their intended use only.,

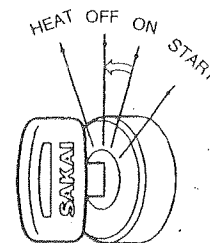


■ **Change safety-related parts at regular intervals.**

- Replace fuel hose and high pressure hydraulic hoses regularly to prevent fire. Replace high pressure hoses of the power steering system every two years.
*Change these parts at regular intervals even if found to be normal. They will deteriorate as time goes on.
* Change any hose found to be abnormal even if it is within its recommended service interval.

■ **Inspect or service your machine with the engine stopped.**

- If required to keep the engine running in such a case as radiator interior cleaning, perform the work with two
- persons. One of them should sit on the operator's seat getting ready for shutting down the engine. He must take care not to touch any of controls carelessly. • Maintenance personnel must exercise extreme caution



A WARNING: Negligence of these instructions can lead to accidents.

1. BASIC PRECAUTIONS FOR SAFETY

■ **Supplying fuel and oils**

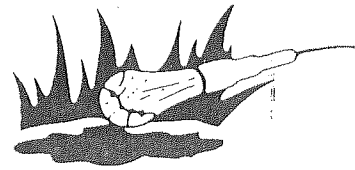
- Spilled fuel or oil will be slippery. Wipe up immediately. Keep the filler caps tight. Do not use fuel for flushing oil. Handle fuel and oil in a well ventilated area.

■ **Check the coolant level in the radiator.**

- To check the coolant level, shut down the engine and allow the engine and radiator to cool down.

■ **Illumination**

- For inspecting the level of the fuel, oil, coolant and battery electrolyte, use burn-proof illuminations. Failure to use this type of illumination can result in an explosion.



1.11 During servicing

■ **Keep unauthorized persons away**

- During service, do not allow persons not concerned to enter the work area, particularly when grinding or welding operation is performed or heavy hammers are being used.

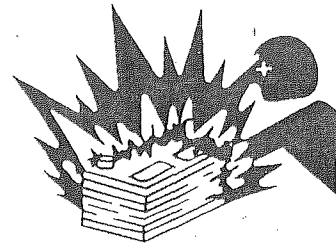


■ **Keep your machine clean**

- Spilled oil, grease or scattered debris are dangerous. Always keep your machine clean. Moisture that penetrates into the electrical system can cause malfunctions. Do not use water to clean sensors, connectors and the operator's station.

■ **When repairing the electrical system**

- For repairing the electrical system or for conducting welding, disconnect the negative cable from the battery to shut off the electricity.



■ **Carefully handle high pressure hoses.**

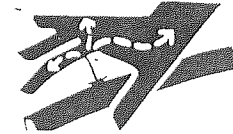
- Do not try to bend or hit hoses against a hard object. Do not use hoses or pipes that are bent or damaged. They will burst.
- Replace damaged fuel hose and hydraulic hoses. An oil or hydraulic fluid spill can cause a fire.

A WARNING: Negligence of these instructions can lead to accidents.

1. BASIC PRECAUTIONS FOR SAFETY

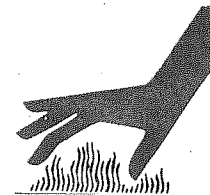
- **Be careful of high pressure hydraulic fluid.**

- systems are under internal pressure. Do not perform adding, draining, inspection or servicing of the hydraulic systems until the internal pressure has been relieved. Hydraulic fluid leaking through a fine hole at high pressure can penetrate your skin and eyes. Inspect leakage by holding a hard board close to suspected leaks wearing goggles. If affected by high pressure oil, get medical help immediately.



- **Be careful of hot parts**

- After the machine has been operated for some time, the coolant, engine oil and hydraulic fluid will become hot

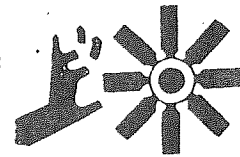


- Removing the radiator cap or draining the coolant or oil r can burn you. Perform this work in accordance with correct procedures after the systems have cooled

down.

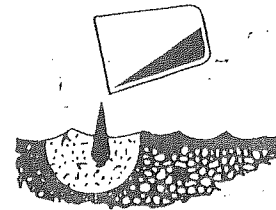
- **Use care when inspecting or servicing fan or belts in motion'**

- Secure loose clothing and keep articles away that could get caught in moving parts.
- Do not let your body or tools make contact with the fan blades or belts. They can be cut seriously.



- **Used oil disposal -**

- Do not throw used oil into a drain or waterway. Drain the oil from the machine into a proper container. Do not drain directly on the regulations for the proper disposal of oil, fuel, coolant, battery electrolyte or any other fluids.



B

A WARNING: Negligence of these instructions can lead to accidents.

1. BASIC PRECAUTIONS FOR SAFETY

1.12 Safety Decals

Keep all decals clean. If lost, replace with new one. There are decals other than those shown below: Treat them in the same manner as the one shown here.

• 3998-16504-0

A WARNING
<p>1. When Handling the Machine: Operate only while seated. Use the handrails and steps when boarding and getting off. • Never carry passengers. *Never attempt to board or get off the machine while it is moving.</p> <p>2. Preparation for Safe Operation *Clean the steps, operators station and floorboards. *Obey the worksite rules. -Sakai accepts no responsibility for any injury or damage to the machine caused by unapproved modification. • Do not use a machine which needs repair or maintenance. *Sound the horn immediately prior to starting the engine to warn people in the vicinity.</p> <p>3. Starting the Engine Check that all operating levers are in the neutral position. • Idle the engine for about 5 minutes to warm it up prior to commencing work.</p> <p>4. Parking Precautions *When parking the machine, park it on level ground, set the parking switch and set the roller chocks. *Allow the engine to cool off by running it for about 5 minutes before stopping. *When getting off the machine, remove the key from the ignition switch.</p>

• 3998-16499-0 (2 locations)

A WARNING
<ul style="list-style-type: none"> • Do not open the hood with the engine running. <p>Contact with hot parts will cause burns. Contact with rotating parts will cause severe injury.</p>

• 3998-16501-0

-A DANGER
<p>Be Careful with Fire *When refueling, stop the engine and do not</p> <p>-The filter cap of the fuel tank must be</p>

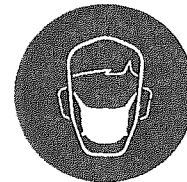
○ 3998-16497-1

A WARNING
<p>Thoroughly read the operator's manual before using the machine.</p> <ul style="list-style-type: none"> • Incorrect operation can cause severe injury or death. <p>-It is your responsibility to operate the machine safely</p>

• 3998-16502-6

A DANGER
<ul style="list-style-type: none"> • Do not approach, or allow objects to touch the rotating parts. -Body parts which make contact with rotating mechanism will be severed. • Do not open the radiator cap when fluid is hot. • Radiator fluid is flammable. Avoid exposure <p>*Avoid contact with machine parts in the vicinity of the engine while engine is running and after it has been stopped. Contact with hot part will cause burns.</p>

○ 3998-06139-0



○ 3998-16507-1

A CAUTION
<p>Lubricate all grease fittings daily prior to commencing work.</p>

® 3998-16500-0

A WARNING
<p>*Avoid Inhalation of exhaust gas. *Avoid contact with exhaust pipe while engine is running and after it has been stopped. Contact with hot exhaust pipe will cause burns.</p>

© 3998-16505-0

A DANGER
<p>Roll Over Prevention</p> <ul style="list-style-type: none"> • Do not work in the vicinity of overhanging banks, or on grades steep enough to cause the machine to slide or roll over. • Reduce speed prior to making turns. • Pay particular attention when operating on uneven surfaces, as the machine may become unstable.

○ 3998-16510-0

A CAUTION
<p>Refill the specified quantity of oil in the vibrator case when changing oil.</p>

• 3998-16468-1

A CAUTION
<p>When storing this machine, release the parking brake once a month to prevent it from jamming.</p>

® 3998-16489-0

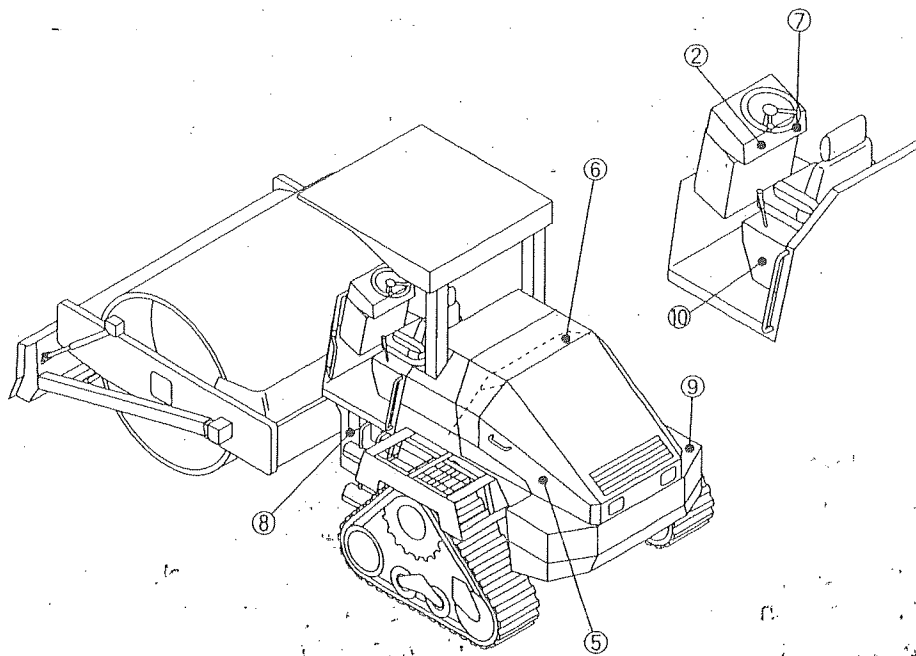
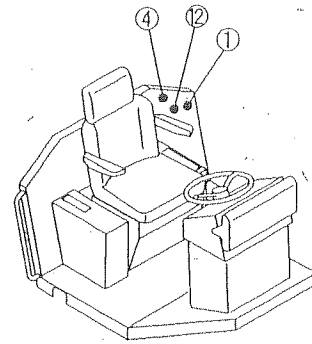
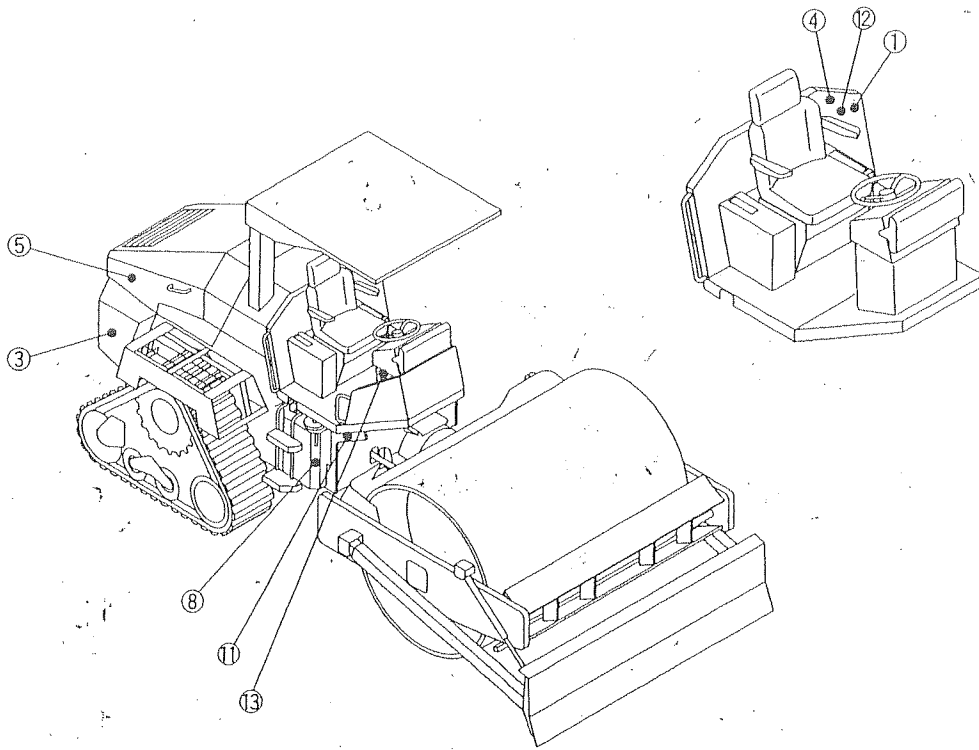
<p>CALIFORNIA Proposition 65 Warning Diesel engine and some of its constituents are known to the State of California to cause cancer, birth defects, and other reproductive harm.</p>

® 3998-36002-0 (2 locations)



A WARNING: Negligence of these instructions can lead to accidents.

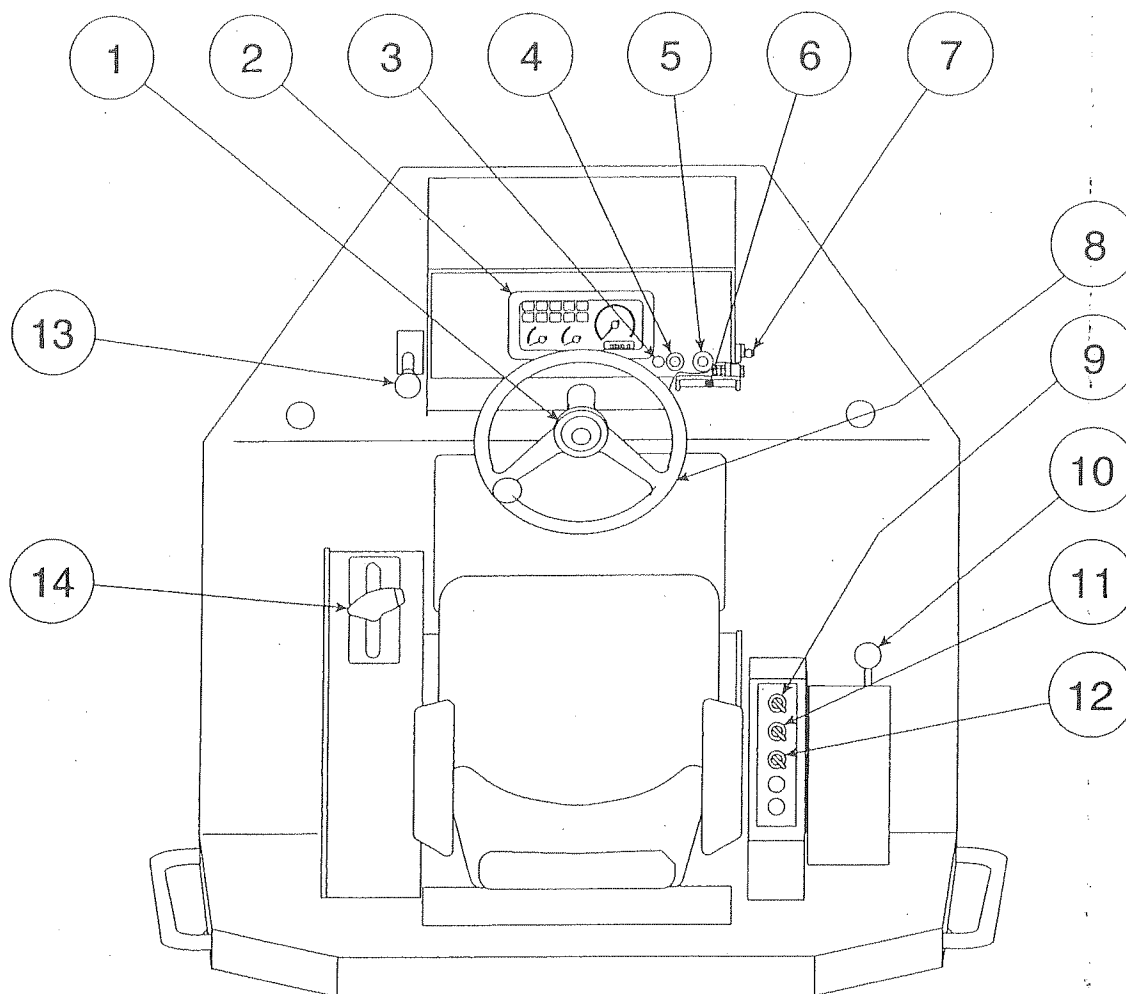
1. BASIC PRECAUTIONS FOR SAFETY



2. OPERATION

2.1 Instruments and Controls

2.1.1 Operator's station



Ⓛ Horn switch button

Ⓞ Combination meter

Ⓢ Pilot lamp

(For Differential lock)

Ⓢ Differential lock switch

Ⓢ Parking brake switch

Ⓢ Brake pedal

Ⓞ Starter switch

Ⓢ Steering wheel

Ⓢ Vibrator switch

Ⓞ Blade lift lever

Vibration selector switch

Ⓞ Speed change switch

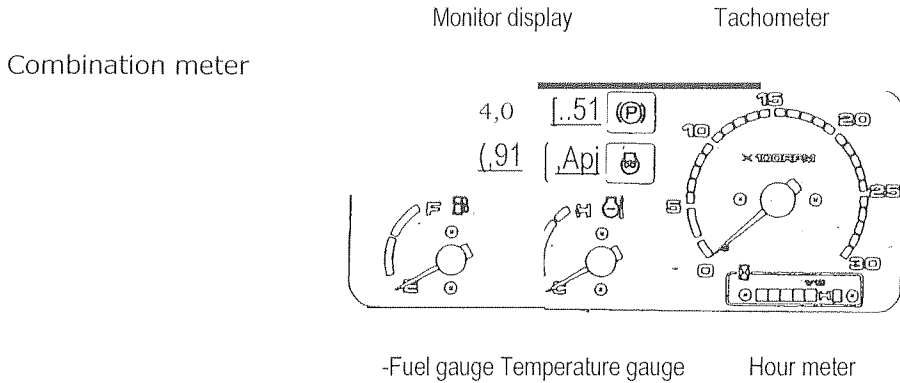
Ⓞ Throttle lever

Forward-reverse (F-R) lever

(For vibrator switch)

2.1.2 Gauges, indicator lamps and warning lamps

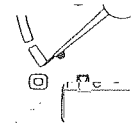
For safe execution of your job, fully understand the role and function of the systems involved.



Tachometer

Indicates the engine RPM. The hour meter shows total operating hours. The service interval recommendation in this manual should be based upon the hour meter readings.

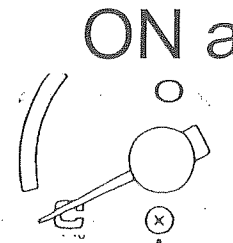
,=Izicc:1:pgC7



Tachometer/Hour meter

Temperature gauge

Indicates the coolant temperature. Zone close to symbol H indicates overheating. In case of overheating, run the engine at idling for about ten minutes before shutting it down. Then determine the cause.

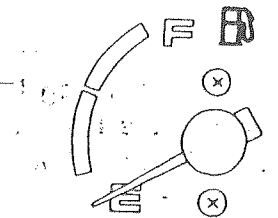


Temperature gauge

Fuel gauge

Indicates the fuel level in the tank.

- E: The tank is empty.
- F: The tank is full.



Fuel gauge

2. OPERATION

Monitor display

Hydraulic oil filter warning lamp Goes on when filter is clogged.

Battery charge lamp _____
Goes on when troubles have occurred in electric system while engine is running.

Turn signal indicator lamp (Option)

Flashes when turn signal lever is moved.

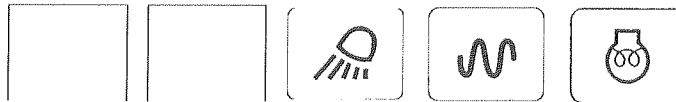
_____ **Engine oil pressure warning lamp**,
Goes on when engine lubricating oil pressure is lowered below specified value.

_____ **Parking brake indicator lamp**

• Goes on when parking brake is engaged.

f u g

ac



Flood lamp indicator lamp
Goes on when flood lamps are lighted.

Preheating plug indicator lamp

Goes on when starter switch is turned to HEAT.

Vibrator indicator lamp

Goes on when vibrator operates.

* Indicator lamps [4.4 (®) A? _____]

Light up when corresponding systems have been operated.

*Warning lamps [_____]

Go on when the starter switch is turned to the ON position and go off when the engine has started. If any of them lights up while the engine is running, this indicates a faulty condition. Stop the engine and trace the source of trouble. •

* Bulb failure check

= Warning lamps and parking brake indicator lamp =

They should go on when the starter switch is turned to the ON position. If not, corresponding bulb has burnt out.

CAUTION:

Hydraulic oil filter warning lamp may go on when the engine rpm is increased before the engine has been warmed up enough. Keep the engine idling until the lamp goes off, before starting your work.

2.1.3 Switches

Starter switch

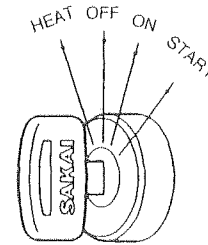
Starts and stop's the engine.

HEAT: When the engine is cold, hold the starter switch in the HEAT position, the heater indicator lamp will go on. Stay in that position until the indicator lamp goes off. Release the switch key when the indicator lamp goes off. The key will automatically return to the OFF position. Turn the key to the START position to start the engine.

OFF: The key can be removed in this position. All the electric systems are switched off. To shut down the engine, move the key to this position.

ON: The charging circuit and lamp circuit are charged with electricity. Let the key stay in this position after the engine has started.

START: The engine is cranked and gets started. The moment the engine has started, release the key. It will automatically return to the ON position.



Parking brake switch

If switch is pressed down, the parking brake applies with the indicator lamp on the monitor display lighted up.

When pressed again, the brake is released and the indicator lamp goes off.

A WARNING

- To disengage the brake, be sure to press the button again instead of pulling it.
- When dismounting from the machine, press the button to apply the brake without fail.

A CAUTION

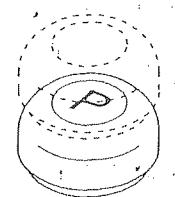
Never pull the switch UP.

— **IMPORTANT**

- In an emergency, apply brake by pressing the parking brake switch button.

, Released

Applied —



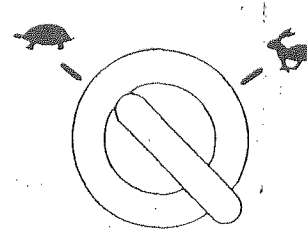
2. OPERATION

Speed change switch

Selects two vehicle speed ranges.

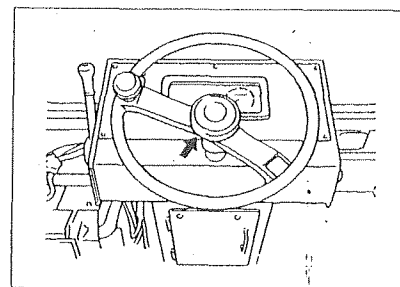
	..iw (Low)	1 (High)
Speed	0-3.0 (0-1.9)	0-5.3 (0-3.3)

km/h mile / h)



Horn switch button

Pressing the button at the center of the steering wheel, makes the horn sound.

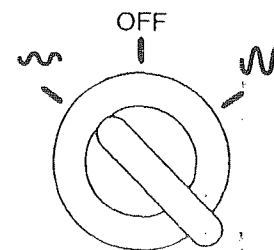


Vibrator switch

By means of vibrator switch located on the panel to the right of operator seat, selection of vibration amplitude and On-Off is mode.

gAr position: Turning the vibration switch clockwis causes the vibration to start with high amplitude. OFF position: Vibration is shut down.

v1/4" position: Turning the vibrator switch counter clockwise causes vibration to start with low amplitude.



Vibrator switch p

NOTE: For vibratory rolling, run the engine at 1,800 rpm or higher.

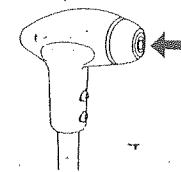
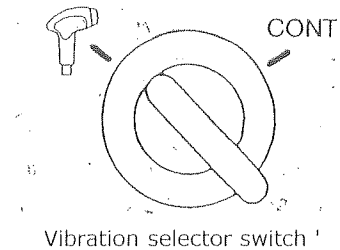
Vibration selector switch

Selection can be made between the vibrator switch installed to the forward-reverse lever and the other one located on the panel to the right of operator seat.

Ifi^D position: Vibration can be turned ON or OFF with the switch located on the forward-reverse lever. Pressing this switch causes the vibration to start and pressing it again to stop.

This vibrator switch on the lever should be used with the vibrator switch on the panel placed at Ar or (AP position).

CONT position: Have this switch placed at this position when vibration is not to be actuated.



NOTE: For vibratory rolling, run the engine at 1,800 rpm or higher.

IMPORTANT

- **Do not operate the vibrator on a hard area such as cement concrete pavement surface or the ground covered by thick steel sheets.**
- **Keep the vibrator "off" when the machine is standing.**
- **Shut off the vibrator immediately when the machine has been caught in the mud during vibratory operation.**

Differential lock switch

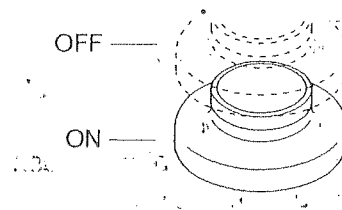
To be used when it is impossible to travel with front roll or rear wheels slipping.

Pushing the switch engages the diflock (Pilot lamp goes on).

Pushing the switch once again disengages the diflock (Pilot lamp goes off).

A CAUTION

- **After the use, be sure to return the switch to original position.**
- **Do not pull the switch.**

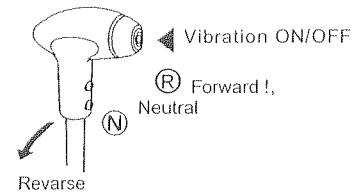


2. OPERATION

2.1.4 Operating levers / pedals

Forward reverse lever (F-R lever) with vibration switch

Moving the F-R lever forward or backward makes the machine travel forward or backward respectively. The neutral position brings the machine to a stop. The vehicle speed increases or decreases in proportion to the lever displacement.



Provided at the knob of the lever is the vibration switch for turning on or off the vibration.

IMPORTANT

- **For normal braking, return the F-R lever back to neutral.**
- **In an emergency, depress the brake pedal or press the parking brake button.**

Throttle lever

Shifts the engine RPM.

The engine RPM increases when moved toward the operator.

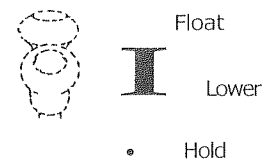
Idling

Full throttle

Blade lift lever

Moves the blade vertically. The lever has 4 positions for "Lift", "Hold", "Lower" and "Float".

The lever has four positions; RAISE, HOLD, LOWER and FLOAT.



Raise

Raise: To raise the blade, pull the lever backward. The lever automatically returns to the Hold position when released.

Hold: When this position is selected, the blade stays in any position.

Lower: To lower the blade, push the lever forward. The lever automatically returns to the Hold position when released.

Float: Push the lever forward to its full extent. In this position, the blade becomes free to ride up and down over the ground, following the ground configuration as the machine

Brake pedal

In an emergency, push down on the pedal to the full extent, and the machine will come to a sudden stop.

NOTE: Depressing the brake pedal all the way causes forward reverse lever to return to neutral position ® as well.

IMPORTANT

Do not use the pedal wherever practicable except for an emergency.

2.1.5 Unloader switch

The unloader switch disengages the drive, playing a role like a clutch. Use this switch for towing the machine when the engine is disabled or when troubles have developed in the hydraulic drive.

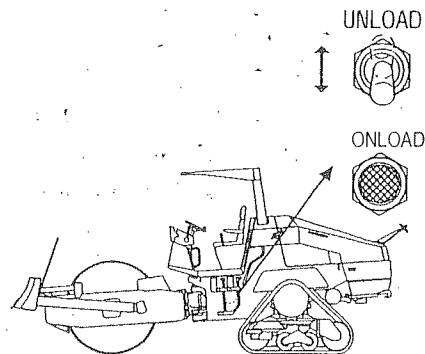
For towing:

Turn the starter switch to ON position.

Place the unloading switch in UNLOAD position (Pilot lamp goes on).

For normal traveling:

Place the unloading switch in ONLOAD position (Pilot lamp goes off).



- On a slope, chock the wheels and use extreme care when handling the unloader switch and towing the machine.
- Be sure to apply the parking brake when operating the unloader switch.

NOTE: For normal travel, be sure to hold the unloader in the ONLOAD position.

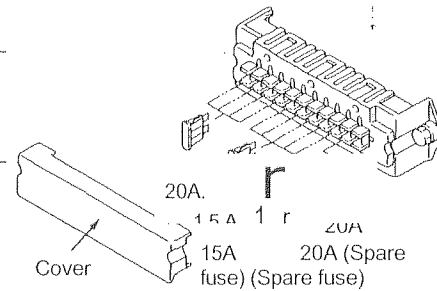
2. OPERATION

2.1.6 Fuse box

A WARNING

When changing a fuse, cut the power supply by turning the starter switch to the OFF position.


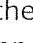

Fuses protect electrical components and wiring from burning. Change any fuse which has become powder-coated due to deterioration or which has a play between it and fuse holder. To replace fuses, take off the cover. Be sure to use fuses of correct capacity.

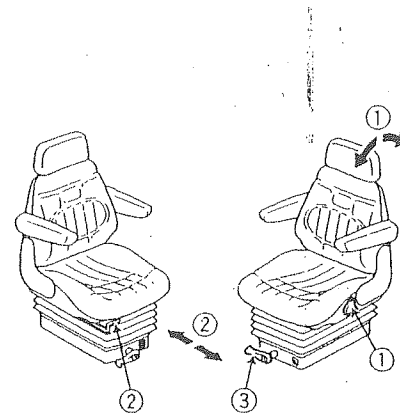


2.2 Handling and Adjustments

2.2.1 Seat adjustment

Set the seat at the desired position that permits comfortable operation.

- 1) Adjustment of reclining angle: Pull the lever  and set the seat back at an arbitrary angle.
- 2) Adjustment of front-rear sliding: Pull the lever  and set the seat at an easy-to-operate position.
- 3) Adjustment of suspension stiffness: Turn the lever  and set arbitrary seat suspension stiffness.

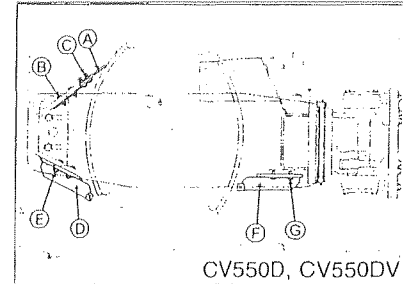


The adjustment will be necessary when operating the machine first or when operators are alternated.

2.2.2 Scraper adjustment and replacement

CV550D, CV550DV

- 1) Clearance adjustment of scraper $\text{\textcircled{R}}$
 - $\text{\textcircled{O}}$ Loosen bolts and nuts $\text{\textcircled{R}}$ at 8 locations.
 - $\text{\textcircled{C}}$ Provide a clearance of 20 mm between scraper blades $\text{\textcircled{R}}$ and the drum.-
 - $\text{\textcircled{R}}$ Retighten bolts and nuts $\text{\textcircled{R}}$ at 8 locations.



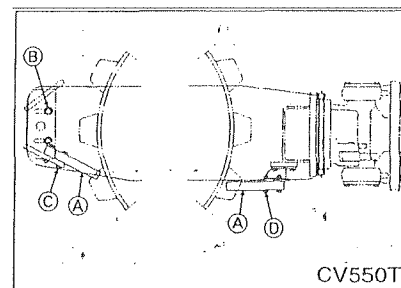
- 2) Clearance adjustment of scraper $\text{\textcircled{R}}$
 - $\text{\textcircled{O}}$ Loosen bolts and nuts $\text{\textcircled{R}}$ at 8 locations.
 - $\text{\textcircled{C}}$ Provide a clearance of 20mm between scraper and the drum.
 - $\text{\textcircled{O}}$ Retighten bolts and nuts $\text{\textcircled{R}}$ at 8 locations.

- 3) Clearance adjustment of scrapers $\text{\textcircled{O}}$ $\text{\textcircled{C}}$
 - Loosen bolts and nuts $\text{\textcircled{C}}$ at 8 location.
 - $\text{\textcircled{C}}$ Provide a clearance of 20mm between scrapers and the drum. • $\text{\textcircled{O}}$ Retighten bolts and nuts $\text{\textcircled{C}}$ at 8 location.

- 5) Clearance adjustment of scraper blades $\text{\textcircled{R}}$. (One at the right and one at the left)
 - $\text{\textcircled{O}}$ Remove bolts and nuts $\text{\textcircled{C}}$ (8 locations respectively at front and rear) $\text{\textcircled{O}}$ Replace scraper blades $\text{\textcircled{O}}$ with new ones.
 - $\text{\textcircled{O}}$ Refit and retighten bolts and nuts $\text{\textcircled{C}}$ (8 locations respectively at front and rear)

CV550T

- 1) Clearance adjustment of scrapers $\text{\textcircled{R}}$
 - $\text{\textcircled{C}}$ Loosen bolts and nuts ED (4 locations) and $\text{\textcircled{C}}$ (16 locations) at bottom.
 - Provide a clearance of 20mm between scrapers $\text{\textcircled{O}}$ and the drum.
 - Retighten bolts and nuts $\text{\textcircled{C}}$ (4 locations) and $\text{\textcircled{C}}$ (16 locations).



- 2) Replacement of scrapers $\text{\textcircled{R}}$ (9 pieces on top and 8 pieces at rear.)
 - $\text{\textcircled{O}}$ Remove bolts and nuts $\text{\textcircled{C}}$ and $\text{\textcircled{R}}$
 - $\text{\textcircled{R}}$ Replace scrapers $\text{\textcircled{R}}$ with new ones.
 - $\text{\textcircled{C}}$ Refit and retighten bolts and nuts $\text{\textcircled{C}}$ and a

2. OPERATION

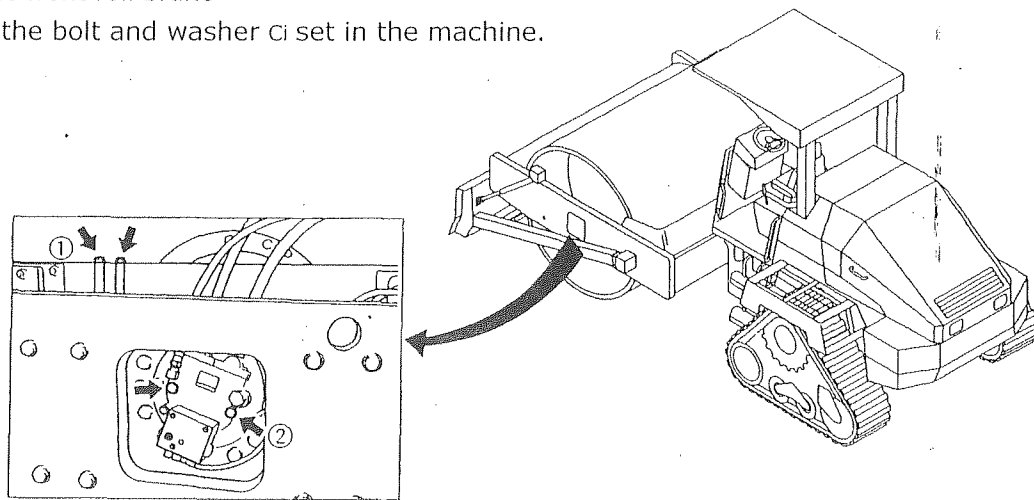
2.2.3 Disengaging the brake when towing

A WARNING

- On a slope, chock the drums and prepare for towing before disengaging the brake.
- Release the rear wheel brake, and then release the front wheel brake.
- Avoid a long-distance towing.

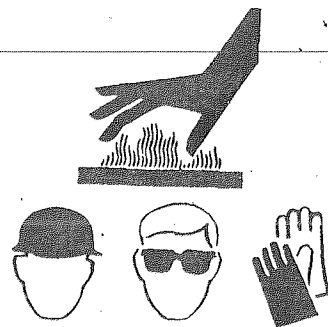
For towing the machine when the engine is disabled or when troubles have developed in the hydraulic system for propulsion, disengage the brake as instructed below:

- 1) Turn the unload switch counterclockwise to release the brake.
(Refer to "Unload Switch" on page 25 for the operation of the unload switch.)
- 2) Releasing the front roll brake
CD Remove the bolt and washer ci set in the machine.



A WARNING

- Do not try to release the brake immediately after a hot engine has been stopped. Let the oil cool down.
- For the brake disengagement, wear hard hat, safety goggles and safety gloves.



© Remove the plugs © (2 places)_from the hydraulic motor.,

NOTE: Oil will come out when the plugs are removed. Finish work quickly.

○ Put the removed bolts and washers ○ in the plug hole, and tighten them alternately.
When they are tightened up, the brake will be released.

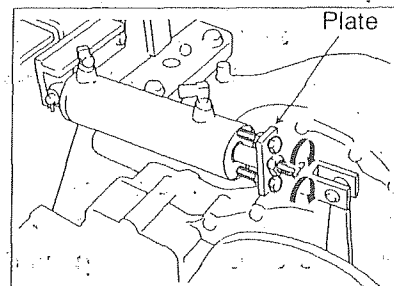
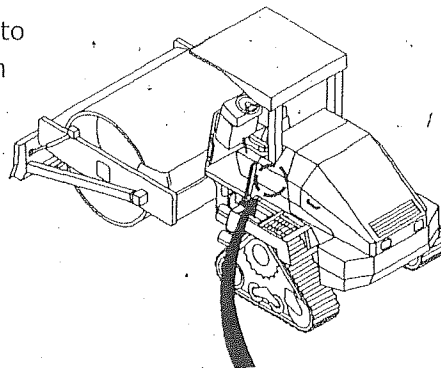
NOTE: Clean the release bolt and plug to remove dirt before attaching them to the hydraulic motor.

Ⓜ After hauling, remove the bolts and washers ○, and fit and tighten the plug ○.
Return the bolts and washers to the original position.

3) Rear brake

○ Screw in, the two bolts on the brake, cylinder alternately until they become a little tight.

Ⓜ When towing is complete, screw out the two bolts to the original position, providing a clearance of 37mm between the plate face end and the cylinder face.



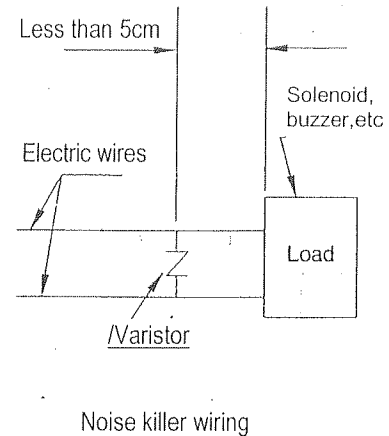
2. OPERATION

2.2.4 Pass counter (OPTION)

The pass counter monitors number of compaction passes, displays the number so that it can be seen from a distant place. Manual mode and automatic mode are available to meet job requirements.

A CAUTION

- Do not start or stop the engine with the power switch ON.
- When wires are replaced, turn the power switch OFF.
- Electronic equipment is sensitive to noise. Malfunctions can occur due to noise. Buzzer, solenoid and relay tend to create noises. When such parts are installed, mount a noise killer such as varistor near the noise generating location.
- Use of radio in the proximity during the work with controller can cause a malfunction.
- When washing the machine, avoid directing the water or vapor to the control panel, controller or wirings.



1) Control panel

Pass count

Indicates the same integrated number of passes as the one displayed on the controller. When reset, it registers "0".

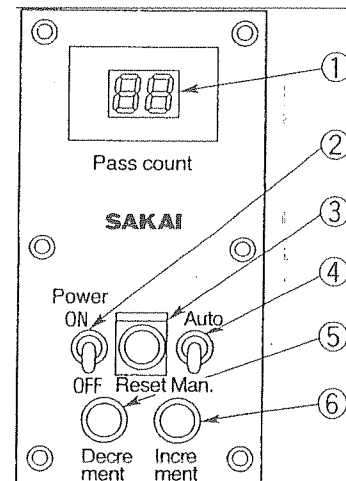
NOTE: The controller display indicates only the numbers up to "19". Over "20", the numbers of one figure alone are displayed.

Ⓡ Power switch

Turning this switch ON supplies an electric current, with the pass counter indicating "0".

Ⓡ Reset switch

Open the transparent plastic cover and press the reset switch. Displayed numbers are cleared, the system returning to the initial condition.



0 Mode selector switch

The AUTO mode automatically counts number of passes, as the machine rolls, counted values being indicated on the pass count and on the controller display.

In the MAN mode, pressing the increment or decrement switch takes count of passes.

Ⓜ Decrement switch

Every time a push is given to this switch, indicated number of passes decreases by one.

ⓐ Increment switch

One push allows indicated number of passes to increase by one.,

2) Operation

(1) Manual mode

0 Turn the power switch ON.

ⓓ Push down the reset switch.

Ⓜ Select the MAN mode.

0 Every time one pass has been completed for a area planned to compact, pushdown the increment switch to increase the displayed pass number by one.

Ⓜ If necessary to reduce the number, push down the decrement switch.

(2) Automatic mode

Automatic mode operation can be performed by receiving forward and backward travel signals from the machine.

0 Turn the power switch ON.

Ⓜ Push down the reset switch.

Ⓜ Select the AUTO mode.

Ⓜ Start compaction operation. Automatic pass counting starts with the F-R lever'i-noVed forward or rearward. i -I

Ⓜ If necessary to change indicated number of passes, place the F-R lever in neutral. The change is effected by operating the decrement or increment switch.

(3) Specifications

Service voltage	+20 - +32 DC
Service current	Less than 1A (Controller fuse: 5mm dia. x 20mm, 2A glass tube)
Working temperature	-20 - +80°C (-4 - +176°F)
Working relative humidity	Below 80%. Avoid due condensation.

2. OPERATION

2.3 Operation

A WARNING

- This machine is a one-man roller.
- Operate the machine from the operator's seat.

2.3.1 Before-starting inspection

(1) Check that the steering lock bar is in the carrying position.

A WARNING

Make sure that the steering lock bar is connected in the carrying position before putting the machine in motion. Steering is impossible if the bar is in the steering lock position.

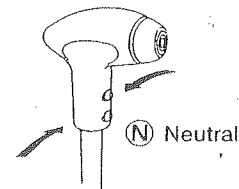
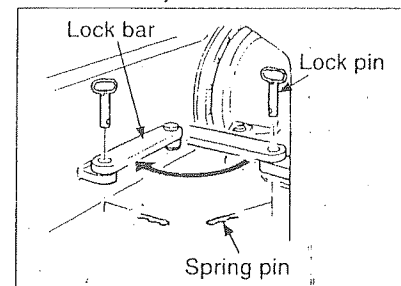
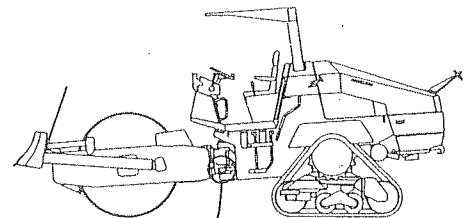
The bar is located at the left of the center of the machine.

To unlock the bar:

- Remove the spring pin.
- Ⓜ Pull out the lock pin.
- Ⓜ Set the bar in the carrying position.

NOTE: Retain the lock bar in the locked position by inserting the lock pin into the lock holes. Fix the lock pin with the spring pin.

(2) Check that the F-R lever is in the neutral position Ⓜ.



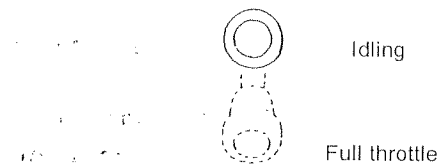
NOTE: The engine does not start if the F-R lever is not in the neutral position Ⓜ.

2.3.2 Starting the engine

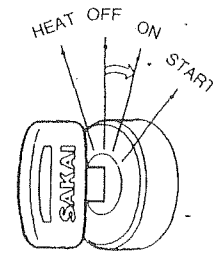
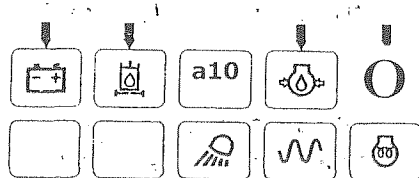
A WARNING

Check that the F-R lever is in the neutral position, and sound the horn when starting the engine after making certain that there are no one and no objects close to the machine.

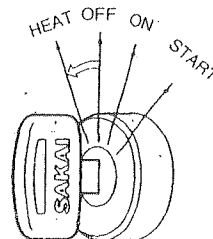
- (1) Set the throttle lever in a position slightly higher than IDLING.



- (2) Turn the starter switch to the ON position and check that the warning lamps and parking brake indicator lamp on the monitor display are on.

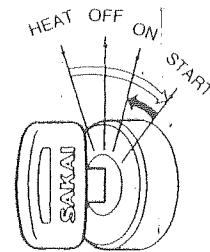


- (3) For cold weather starting, turn the starter switch to the HEAT position to let the glow indicator become bright. Stay in this position till the glow indicator goes off. Then turn the switch to the START position.



2. OPERATION

(4) Turning the key to the START position makes the engine start. Release the key the moment the engine has started. The key will automatically return to the ON position.



CAUTION

- Do not allow the starter key to stay in the START position for more than 15 seconds.
- If the engine does not start, allow an interval before trying again.
- Check that the warning lamps on the monitor display go off immediately after the engine is started. If any of these warning lamps becomes bright while the engine is running, shut down the machine, determine the cause and rectify the fault.

2.3.3 After starting the engine

Try not to move to operation immediately after starting but observe the following:

IMPORTANT

Avoid increasing the engine speed abruptly before warming-up run is completed.

Ⓜ Run the engine at around 1,200 rpm for about 5 minutes to warm it up. Warming-up run allows the lubricating oil to reach the vital parts of the engine and hydraulic system, while gradually bringing up the engine oil and hydraulic oil to the working temperature.

() After the warm-up operation, check that:

- Temperature gauge Pointer falls near the center zone.
- Fuel gauge Pointer falls between the E and F marks
- Charge lamp Has gone off.
- Engine oil pressure warning lamp Has gone off.

Ⓜ Check for the color of exhaust gas, listen for unusual sounds and vibration. If abnormal, determine the cause and correct the problem.

2.3.4 Traveling

A CAUTION _____

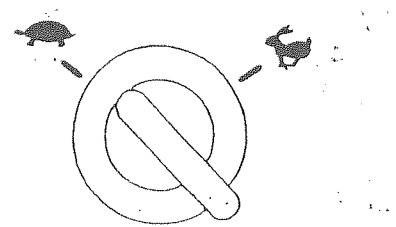
While travelling, do not turn the starter switch OFF.

A WARNING _____

When starting, operate the horn after securing the safety around the machine.

(1) Select the desired speed by the operation of speed change switch.

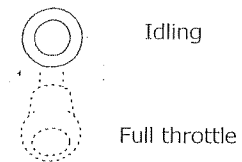
	..	(Low)	9	(High)
Speed	0-3.0	(0-1.9)	0-5.3	(0-3.3)
	km / h (mile / h)			



A WARNING _____

On a steep slope, run the machine at low speed. Do not attempt to shift speed while travelling.

(2) Speed up the engine by pulling the throttle lever towards you:-



(3) Press down the parking brake switch button to release the brake. Check that indicator lamp 1mi on the monitor display goes off.



Released —

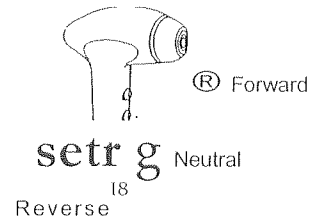
Applied —

2. OPERATION

(4) Move the F-R lever in the direction to travel, and the machine will begin traveling.

A CAUTION _____

Avoid abrupt operation of the F-R lever.



NOTE: The travel speed can be controlled by the throttle lever and F-R lever.

A WARNING _ _____

Pay extreme attention to the area behind the machine when backing, since the space just behind it tends to be a blind spot.

2.3.5 Stopping / Parking

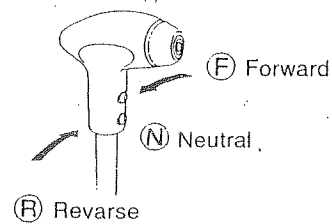
A WARNING _____

- **Avoid abrupt braking. Try to leave enough time for braking.**
- **Avoid parking on a grade.**
- **If necessary to park on a grade, block the wheel to prevent unexpected moving down the grade.**

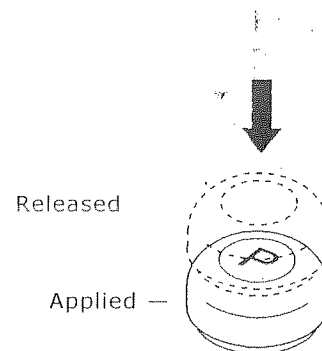
(1) Bring the F-R lever to the neutral position (N), and the machine will come to a halt.

A CAUTION _____

- **For normal braking, move the F-R lever back to the neutral position. In an emergency, depress the brake pedal.**



(2) Press the parking switch button securely, and check that indicator lamp _ **illuminates.**



2.3.6 Stopping the engine

(1) Gradually cool down the engine at low idling for about 5 minutes.

Idling

Full throttle

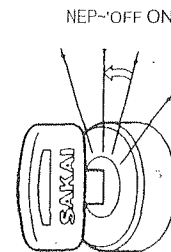
IMPORTANT

- Do not bring a hot engine to a sudden stop except for an emergency. This will shorten the life of its component parts.
- Do not also allow an overheated engine to come to a sudden stop, but run it at middle idling speed for gradual cooling down.

(2) Turn the starter key to the OFF position to stop the engine.

A CAUTION

Do not turn the starter switch OFF while the machine is in motion.



(3) Remove the starter key.

A WARNING

- When dismounting from the machine, apply the brake by pressing the parking switch button. If necessary to park on a grade, block the wheels to prevent unexpected moving down the grade.
- Never fail to remove the starter key

2.3.7 Check after stopping the engine

- 1) Perform the walk-around checks for oil and water leakage, abnormal signs around the drums.
- 2) Fill the fuel tank.
- 3) Remove waste paper if any from the engine compartment, as this will pose a possible fire hazard.
- 4) Scrape mud or other materials from and around the drums.

2. OPERATION

2.4 Vibratory Operation

- (1) Run the engine at 1,800 rpm or higher by operating the throttle lever.

Idling

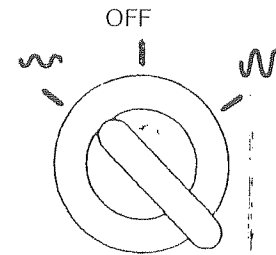
Full throttle

- (2) Amplitude of vibration is selectable and turned on and off with the vibration switch 0 located on control panel to the right of operator seat.

AP position: Turning the vibration switch clockwise causes the vibration to start with high amplitude. OFF position: Vibration is shut down.

.n^p position: Turning the vibration switch counter clockwise causes vibration to start with low amplitude.

NOTE: For vibratory rolling, run the engine at 1,800 rpm or higher.



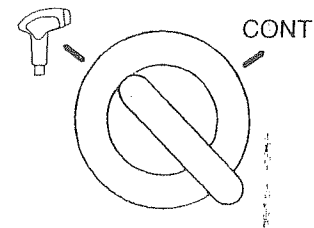
Vibrator switch 0

Also, by means of vibration selector switch 8, the selection can be made between the vibration switch © installed to the forward-reverse lever and the other one located on the panel to the right of operator seat.

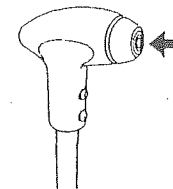
V^p position: Vibration can be turned ON or OFF with the switch located on the forward-reverse lever. Pressing this switch causes the vibration to start and pressing it again to stop.

This vibration switch on the lever should be used with the vibration switch on the panel placed at Ar or ..A" position.

CONT position: Have this switch placed at this position



Vibration selector switch 0



Vibrator switch ©

- 3) Proper travel speed for vibratory compaction is 1.2-3.1 mph, however, select speeds' depending upon job requirements.

IMPORTANT

- **Keep the vibrator shut off when the machine is not rolling.**
- **Stop vibration if the machine has encountered a running difficulty, for example, when it gets stuck in the mix!**
- **Set the speed change switch in the LOW (low speed) position during vibration rolling). Set it in the HIGH (high speed) position only for deadhead operation on a flat straight road.**

2.5 Precautions for Work

2.5.1 Compaction operation

■ **Do not operate the vibrator on hard location**

- Do not work the vibrator on a hard surface such as concrete pavement, as this can cause the machine to jump and give abnormal shock load. Damage to shock isolators will result.

■ **Change the direction of travel gently.**

- When changing the direction of travel during asphalt mix compaction, slowly shift the F-R lever.

2.5.2 When going downhill

■ **Use the F-R lever.**

- Run slowly by the operation of the F-R lever even if the travel distance is short.-

■ **Use the engine brake**

- Go downhill by applying the engine brake along with the F-R lever operation.

- **When going uphill, run at low speed. Do not attempt to shift speeds during travelling. The machine can slip down the slope.**
- **When going downhill, adjust the travel speed not to allow the engine speed to exceed 2,500 rpm.**

2.5.3 On a slope

■ **Working on a sidehill**

- Work in an uphill/downhill direction, and avoid working on sidehill with the machine inclining sideways.

2. OPERATION

2.6 Applicable Jobs

1) This machine is mainly used for:

- Static compacting work
- Vibratory compacting work

2) Road rollers do a variety of jobs as listed below.

This machine most effectively handles works or materials marked *.

Work

- Asphalt road paving
- Dust removal treatment for road
- * Road improvement
- * Embankment construction
- * Dam construction
- Construction of forestry and farm roads
- Foundation building
- Construction of sidewalk, shoulder and gutter foundation

Material to be compacted

- Asphalt pavement
- * Crusher run
- * Cement concrete
- * Sands
- * Soils
- * Slag
- * Soft rock

Layers to be compacted

- Surface course, Binder course
- * Base course
- Subgrade
- * Embankment
- Shoulder
- Sidewalk

2.7 After Operation

Check for the coolant temperature, engine oil pressure and fuel level.

Follow the procedures below to prevent the machine from falling into an unworkable condition the following morning caused by muds and other extraneous matter on the drum, or frozen drums:

- 1) Remove muds and water from the machine. Muds can get into the seals together with water drops on the hydraulic cylinder piston rod. Damaged seals will result.
- 2) Park the machine on a hard and dry surface. If such a place is not available, cover the ground with hard plates.
- 3) Low temperature will cause a significant reduction of battery efficiency. Cover batteries or take them off from the machine and store in a warm place for the following day's operation.

2.8 Loading and Unloading

- Use sturdy ramps with proper width, length and thickness which allow safe loading and unloading.
- If the ramps deflect considerably under load, apply wooden blocks to reinforce them.
- Loading should be conducted on a level and hard ground. Leave a sufficient distance between the machine and the shoulder.
- To prevent slippage on the ramps, keep the drums free from mud, oils, etc. The ramps must also be free of grease, oil and ice.
- Do not steer the machine on the ramps'. If the machine is facing in the wrong direction, allow it to dismount from the ramps and correct the direction.

For loading and unloading, use ramps or a proper loading stand.

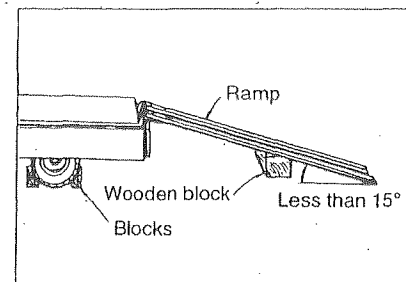
2.8.1 Use of a trailer equipped with a winch

A WARNING

Placing the unloader valve in **UNLOAD** position disrupts the power for traction. Do not enter the areas ahead of and behind the machine. It is very dangerous.

(1) Engage the trailer brake and chock its wheels. Fix the ramps so that the machine and trailer are completely aligned.


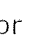
The angle between the ramps and ground must be less than 15 degrees.



2. OPERATION

✓ Leave a proper space between the ramps according to the width of the roller drum.

(2) Decide the correct direction of run and make the machine run forward to the ramps.

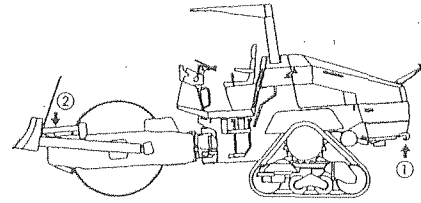
(3) Draw the wire rope from the trailer winch and put its hook on the hooking point  or  (One each on right and left) of the roller.

(4) Place the unloader switch located at the operator's station to the UNLOAD position (See "Unloader switch" on page 25).

(5) With the engine running at idle, perform loading by means of the trailer winch.

(6) When the loading is completed, set the unloader switch back in the ONLOAD position.

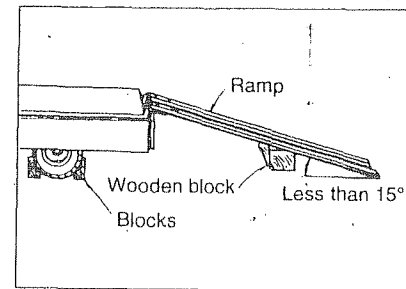
(7) Locate the machine correctly on the trailer.



2.8.2 Self-propelling

(1) Engage the trailer brake and chock its wheels. Fix the ramps so that the machine and trailer are completely aligned.

- * The angle between the ramps and ground must be less than 15 degrees.
- * Leave a proper space between the ramps according to the width of the roller drum.

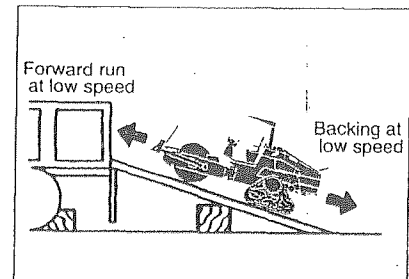


(2) Decide the correct direction of run and conduct loading or unloading at low speed.

For loading, run forward at low speed.

For unloading, run backward at low speed.

(3) Locate the machine correctly on the trailer.



2.9 After Loading the Machine

When the machine has been located properly on the trailer, tie it down as follows:

- 1) Press the parking switch button to apply the parking brake. Place wooden blocks under the drums to prevent movement.
- 2) Fix the machine with ropes tied at the front and rear towing hook holes. Particularly, pay attention to sidewise skidding.

2.10 Transportation

A WARNING

To decide the transporting route, check the width of the road, height and weight (including the roller) of the trailer.

For transportation, obey traffic regulations.

2.11 Operation in Cold Weather

In cold weather, take the following measures to prevent troubles such as starting difficulty and coolant freeze-up.

2.11.1 Fuel oil and grease

Use fuel and oil with low viscosity. See "Rating" on page 64.

2. OPERATION

2.11.2 Coolant

Do not bring an open flame to the antifreeze or do not smoke when handling it. It is inflammable.

IMPORTANT

NEVER use methanol-, ethanol- and propanol-base antifreeze.

Use soft water for coolant.

In freezing weather, add antifreeze to the coolant referring to the table below. Select the most suitable mix ratio according to the lowest temperature in the job location.

Ambient temperature	-33°C (-27.4°F)	-26°C (-14.8°F)	-20°C (-4°F)	-16°C (3.2°F)	-11°C (12.2°F)
Amount of anti-freeze	11 e (2.9gal)	102 (2.6gal)	9 2 (2.4gal)	8 2 (2.1gal)	7 2 (1.8gal)
Amount of coolant	112 (2.9gal)	122 (3.2gal)	13 2 (3.4gal)	14 P (3.7gal)	15 P (4.0gal)
Ratio	50%	45%	40%	35%	30%

Our vehicles are filled with a long-life coolant (non-amine type). -

The validity of the antifreezer is for two years.

Use non-amine type long-life coolant when changing coolant

IMPORTANT

Use of a high consistency antifreeze coolant in summer time can cause the engine to overheat depending upon job conditions. Use a coolant with the water-antifreeze ratio of 30.

2.11.3 Battery

A WARNING

- Batteries generate explosive gases. Do not use an open flame close to 'batteries.
- The battery electrolyte is corrosive. Keep the electrolyte away from your eyes and skin. If you are affected by the electrolyte; flush with large quantities of water and get medical help.

At low temperature, batteries are less efficient. The level of charge is lowered and batteries will tend to freeze. Maintain batteries full charged wherever. practicable, and give attention to heat insulation at night for the next day's operation.

For the level of charge, check the specific gravity of electrolyte and use the following table of conversion.

\ , Temperature	20°C (68°F)	0°C (32°F)	-10°C (14°F)	-20°C (-4°F)
Level of charge (%)				
100	1.28	1.29	1.30	1.31
90	1.26	1.27	1.28	1.29
80	1.24	1.25	1.26	1.27
75	1.23	1.24	1.25	1.26

2. OPERATION

2.12 When the Cold Season is Over

When winter is over and the warm season has come, proceed as follows:

- 1) Change oil and fuel with those for use in warm season referring to "Rating" on page 64.
- 2) If AF-PT antifreeze is in use, drain the coolant completely, wash clean inside the cooling system, and then fill with clean water (city water).

2.13 For a Long Storage Period

For leaving the machine unused for longer than one month, proceed as follows:

- 1) Store the machine in a closed area after cleaning.
- 2) Conduct oiling, greasing and changing of oil.
- 3) Grease lubricate the exposed portion of hydraulic cylinder piston rods.
- 4) Cover the battery after disconnecting the negative cable or take off the battery from the machine and store in a safe place.
- 5) If the temperature is expected to go down below 0°C, add antifreeze to the coolant.
- 6) With F-R lever placed at neutral position ® and vibrator switch at OFF position, have the parking brake engaged.
- 7) Chock the machine.
- 8) Remove the starter switch key.

2.14 During the Storage Period

A WARNING

If necessary to operate the machine for anti-corrosive purpose in closed area, ensure good ventilation keeping windows and doors open to prevent gas poisoning.

During storage, operate the machine at least once a month to prevent the oil films on the lubricated parts from deteriorating and to charge the batteries.

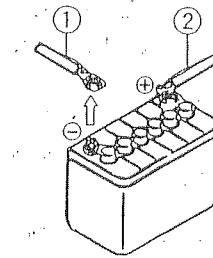
To prevent the brake linings from sticking to the brake drum, disengage the brake once a month. Exercise care not to allow the machine to move unexpectedly.

2.15 When the Battery Has Discharged

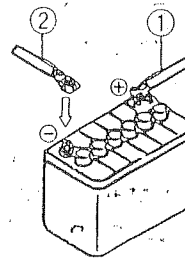
A WARNING

- To check and handle the batteries, keep the engine stopped with the starter switch in the OFF position.
- The batteries give off explosive gases: Do not smoke close to the batteries. Keep flames and sparks away from the batteries.
- The electrolyte is very corrosive and will harm your clothing or skin. If the electrolyte has come into contact with your clothing or skin, flush with sufficient amount of water. In case the electrolyte has gotten into your eyes, flush with water and get medical help. s
- To disconnect the battery cables, start with the negative terminal (earth). When connecting, start with the positive terminal. Do not allow a metallic item to bridge between the positive terminal and machine body. This can generate sparks, causing an explosion.
- Loose battery terminals can cause sparks. An explosion will result. When connecting the terminals, make certain that they are tight.

Disconnect with negative cable first .



Connect with positive cable first

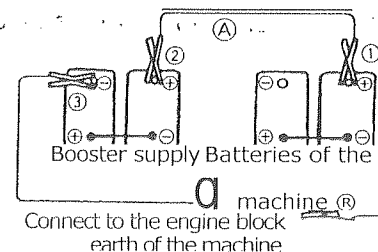


2.15.1 Connection and disconnection of booster cables

When jump-starting the engine, connect the booster cables as follows:

■ Connection of booster cables

- (1) Connect one end of the positive booster cable (Ⓜ) to the positive (+) terminal of the battery* on the machine.
- (2) Connect the other end of the positive booster cable to the positive (+) terminal of the booster supply.
- (3) Connect the negative booster cable (Ⓜ) to the negative (-) terminal of the booster supply.
- (4) Connect the other end of the negative booster cable to a good earth of the engine block of the machine.



3. PERIODICAL MAINTENANCE

3.1 Precautions

Whether or not the inspection service and lubrication are performed at the correct regular intervals exerts significant influence on the occurrence of trouble and service life of the machine. In this manual, typical intervals for inspection and service are given. However, flexibility should be introduced as to interval or type of services to enable your machine to always operate in the best condition.

General precautions:

- 1) Always use Sakai genuine parts for replacement.
- 2) Use lubricants recommended by Sakai. Avoid mixing different brand lubricants.
- 3) For hydraulic oil replenishment, changing, level checking, filter cleaning or replacement, oiling and greasing, use extreme care to prevent dust from entering.
- 4) For checking oil level or changing oil, park the machine on a level and hard surface.
- 5) Change oil while its temperature remains high after operation.
- 6) For a long-term storage, fill the fuel tank, lubricate necessary points and run the machine for more than 20 minutes once a month.
- 7) In freezing weather, add antifreeze to the coolant according to the ambient temperature.
- 8) For the hydraulic pump and motor, have them serviced at authorized service shops.
- 9) Turn the starter switch OFF when performing services such as repairing broken wires, short circuits and tightening loose terminals.

Periodical Replacement of Essential Maintenance Parts

In order secure safety for work and travel, conduct inspection and services. Further, for enhanced safety, following parts and components should be replaced periodically. These parts are prone to material deterioration due to aging or physical change due to friction, while it is difficult to determine their useful limit by regular inspection, which makes it necessary to replace with new ones after certain period of service to maintain their perfect function.

If any abnormality is detected such as crack, deformation or oil leakage, go ahead and replace them even if it is within scheduled replacement time.

3. PERIODICAL MAINTENANCE

System or Mechanism	Part name	Periodical replacement maintenance parts	Replacement period	Remarks
1. Brake system	Master cylinder	Seals (rubber parts)	2 years	Adopted machines only
	Wheel cylinder	Seals (rubber parts)	2 years	//
	Brake piping parts	Brake hose	2 years	
		Air hose	2 years	Adopted machines only
	Operating parts	Cable	4 years	it
2. Steering system	Orbitrol	Seals (rubber parts)	2 years	
	Hydraulic piping parts	Hydraulic hose	2 years	
	Steering cylinder	Seals (rubber parts)	2 years	
	Hydraulic pump	Seals (rubber parts)	4 years	
3. Power transmission system (inclusive of axle)	Axle	Seals (rubber parts)	4 years	Adopted machines only
	Travel pump	Seals (rubber parts)	4 years	/,
	Travel motor	Seals (rubber parts)	4 years	
	Hydraulic piping parts	Hydraulic hose	4 years	#
	Isolation rubber	Isolation rubber itself	4 years	//
4. Fuel system	Piping parts	Fuel hose	4 years	
5. Engine related	Engine mounting parts	Isolation rubber	4 years	
	Seals (rubber parts)	Packing and others	4 years	
	Drive parts	V-belt	2 years	
6. Cooling system	Piping parts	Radiator hose	2 years	
7. Control related parts	Cable	Cable	4 years	Adopted machines only

A CAUTION:

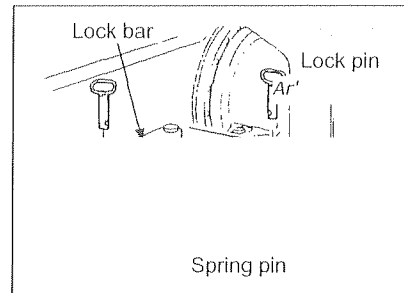
- With a new machine, change the engine oil and change the engine oil filter elements after 50 hours of operation for the first time only. (Refer to page 57)
- When trouble occurs in the location indicated by the indicator lamp on the monitor display, sensor will work and corresponding lamp comes on. If this occurs, conduct necessary service regardless of the periodical service interval recommendation.
 - 1) The hydraulic filter (line filter) warning lamp ° Replace elements
- Check the electric wiring at a regular interval not exceeding one month:
 - 1) Damage to the wire harness and loose clamps
 - 2) Loose sockets
 - 3) Function of electrical systems

3. PERIODICAL MAINTENANCE

3.1.1 Lifting the machine on a hoist

A WARNING

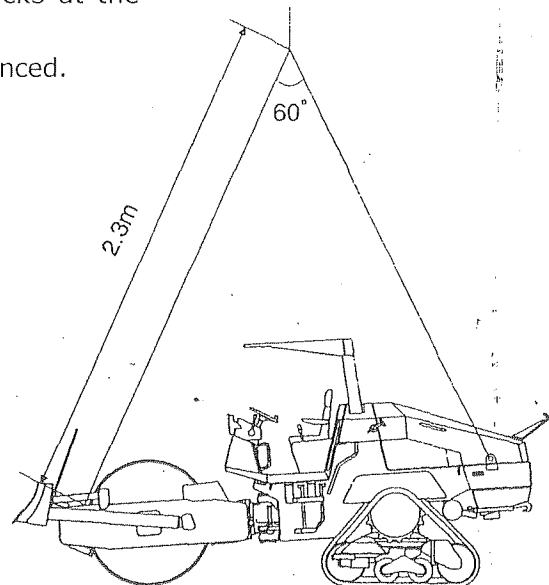
- Get a qualified personnel to lift and lower the machine on a hoist.
- Use sturdy wire ropes.
- Lock articulation by means of lock bar located at the center of machine.



A CAUTION

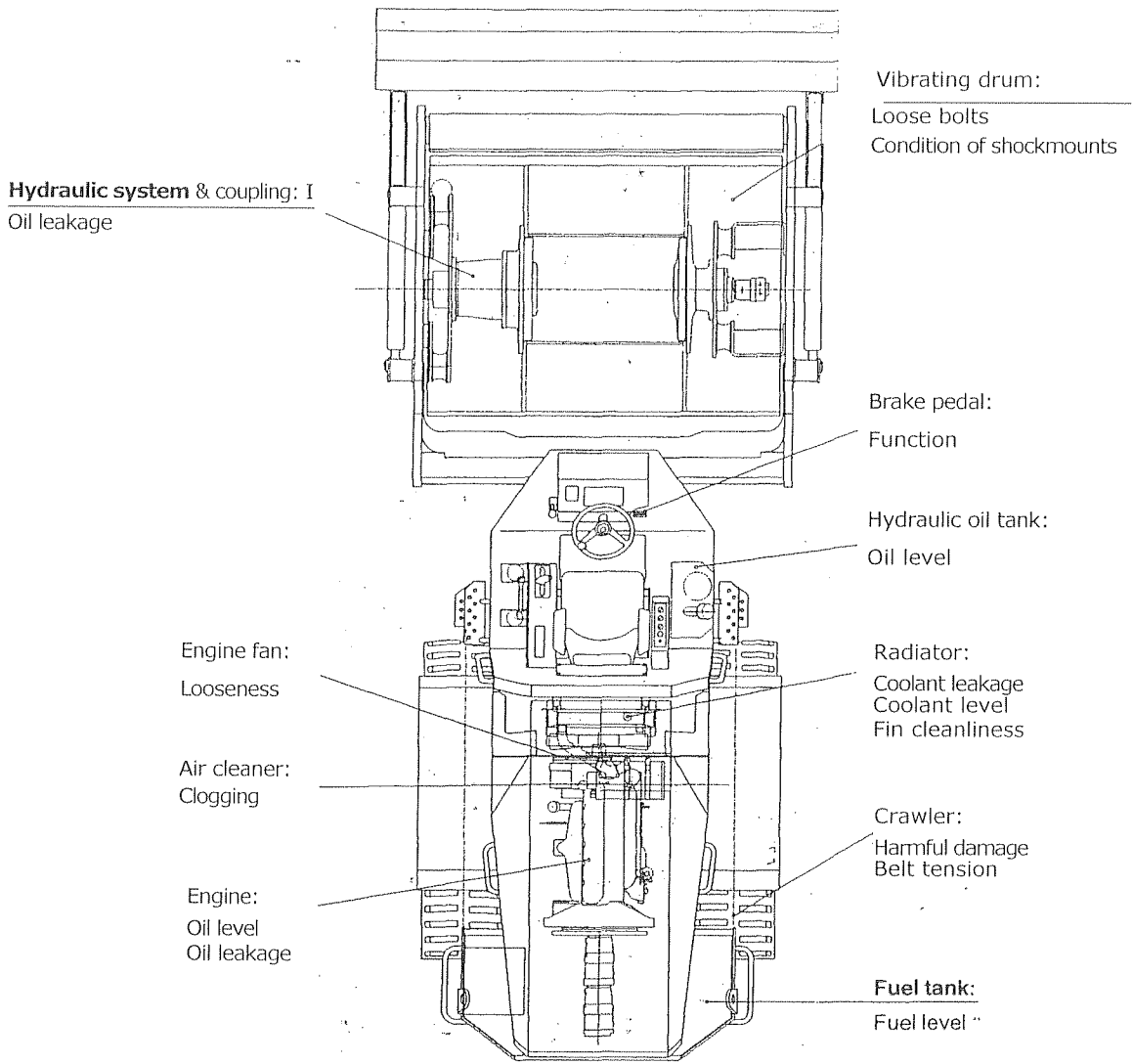
To do the lifting and lowering work, fold the awning.

- (1) Put wire ropes securely on the hook and lifting points as shown.
- (2) If wire ropes make contact with other parts of the machine, put pieces of cloth or wooden blocks at the contact points. Carefully perform lifting.
- (3) When lifting, keep the machine properly ballanced.



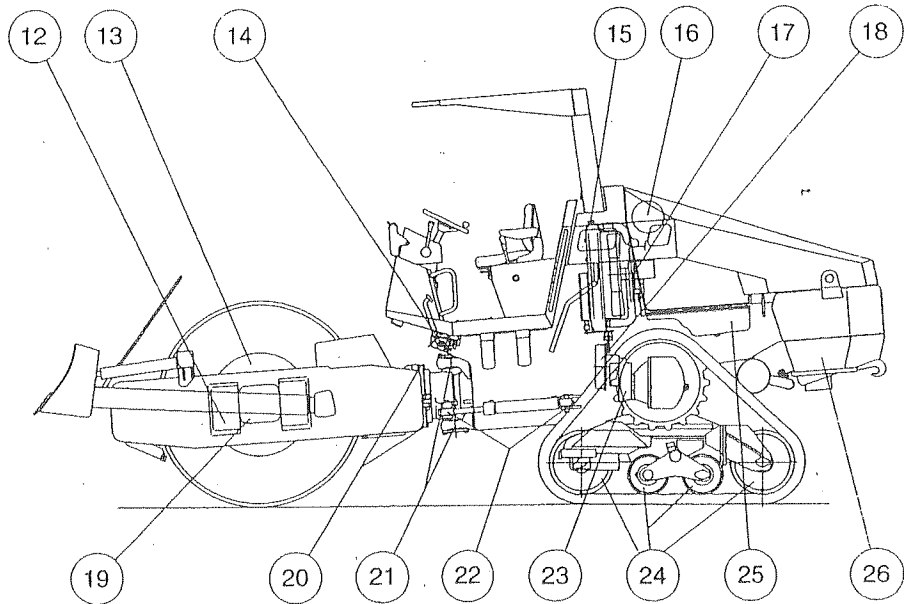
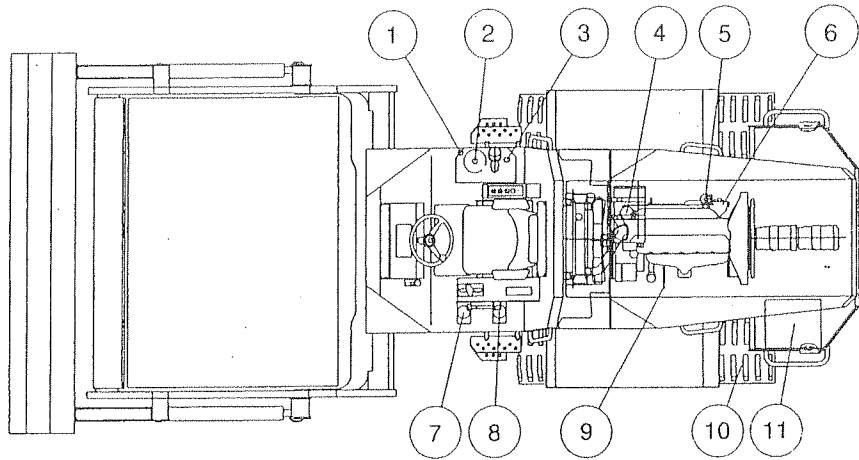
3.2 Walk-around Checking

For efficient operation, daily, before-operation checking is very important. Before starting, perform walk-around checking for loose bolts, nuts and signs of leakage in addition to items as shown below:



3. PERIODICAL MAINTENANCE

3.3 Periodical Maintenance Points



ii

3. PERIODICAL MAINTENANCE

Interval	Symbol	Location	Inspection and service	Lubricant	Q'ty
Every 10 hours or daily	9,	Engine oil pan	Check oil level, add as necessary	Engine oil	1
		Radiator	Check coolant level, add as necessary	Coolant	1
	0	Fan belt	Check tension and adjust		2
Every 50 hours	®	Hydraulic tank	Check oil level, add as necessary	Hydraulic oil	1
		Fuel sedimenter	Check and remove water and sediment		1
	©	Battery	Check fluid level, add as necessary	Battery fluid	1
		Air Cleaner	Check indicator		1
	0	Brake	Check function, adjust		1
Every 250 hours	®	Engine oil filter	Change element		1
	©	Shockmounts	Check condition		10
	0	Vibrator	Check oil level	Gear oil	1
	0	Brake link	Apply grease	Grease	1
	0	Tilt Bearing	Apply grease	Grease	2
	∩	Center pin	Apply grease	Grease	2
	©	Steering cylinder	Apply grease	Grease	4
	∩	Rear axle case	Check oil level, add as necessary	Gear oil	1
	∩	Engine oil pan	Change oil	Engine oil	1
Every 500 hours	®	Fuel filter	Change element		
	®	Return filter	Change element		1
	®	Line filter	Change element		1
Every 1000 hours	®	Suction filter	Clean element		1
	®	Hydraulic tank	Change oil	Hydraulic oil	1
	0	Vibrator	Change oil	Gear oil	1
	0	Gear case : Wheel motor	Change oil	Gear oil	1
	6	Rear axle case	Change oil	Gear oil	
As required		Crawler	Check tension and adjust		2
	8	Air cleaner	Clean or change element		1
	8	Wheel	Check condition		8
		Fuel tank	Clean interior		

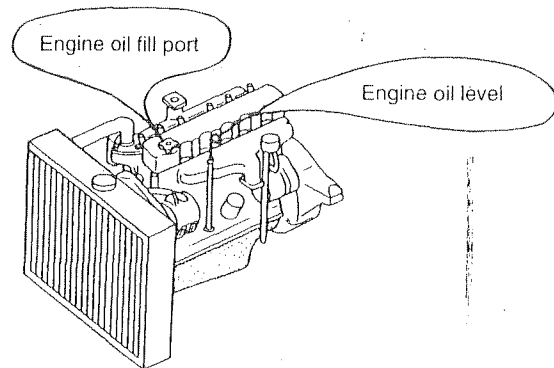
3.4 Maintenance Procedure

•11 For servicing the engine, see the separate engine manual.

(1) Every 10 hours or daily

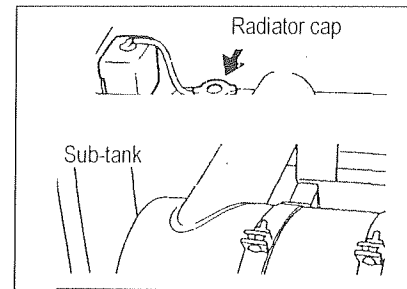
0 Engine oil pan

Shut down the engine and check the engine oil level. If it is not between MAX and MIN marks, add oil through the fill hole.



Radiator

Check to see coolant in sub-tank is up to level mark and replenish with water. Use soft water only.

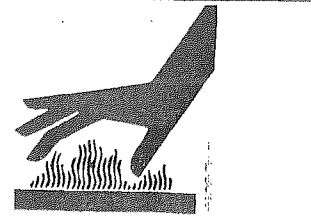


CAUTION

- With radiator cap removed, feed water nearly up to filler port, then replenish the sub-tank as well.
- If level is below LOW mark, remove sub-tank cover and replenish with fresh water up to FULL mark.

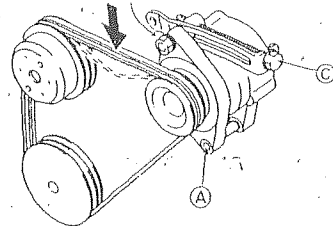
A WARNING

Do not remove the radiator cap while the coolant is hot.



Fan belt

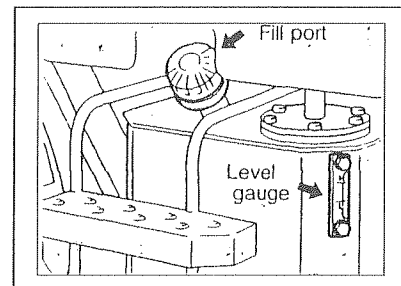
- (1) Check the fan belt for wear and damage. Replace as necessary.
- (2) Check the tension. Depress the middle of belt with a push of about **221b**. A properly adjusted belt deflects $\frac{1}{4}$ inch.
- (3) To adjust, loosen alternator bracket bolt $\text{\textcircled{A}}$ and plate bolt $\text{\textcircled{B}}$, and slide the alternator.



(2) Every 50 hours

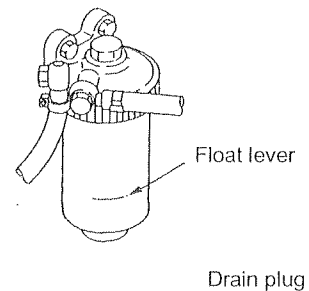
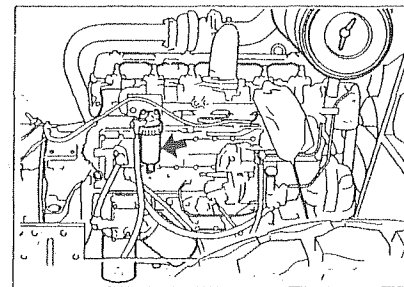
Hydraulic tank

Check the oil level with the sight glass on the side of tank. The level is proper if it is between H and L marks. Of necessary, add the hydraulic fluid from the fill port.



⑤ Fuel sedimenter

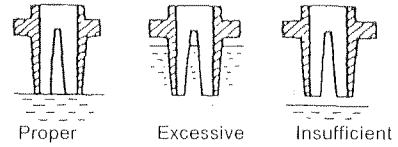
Check the float level. If it comes up to the warning mark, take off the plug at the bottom and drain water.



3. PERIODICAL MAINTENANCE

Battery

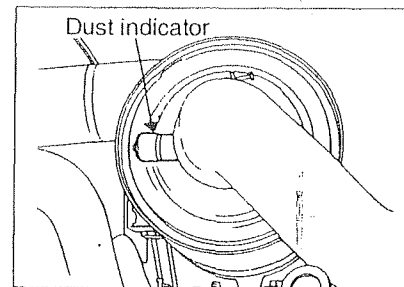
- (1) With the caps removed, check to see if the electrolyte level is above the plates.
- (2) Add distilled water or battery fluid commercially available if the level is too low.
- (3) Retighten any loose terminal. Apply grease or vaseline to the terminals to retard rusting.



Using or charging battery with electrolyte level below LOWER LEVEL mark On its side, could result in explosion. Continuing to use battery with insufficient electrolyte accelerates deterioration of the battery container internals. Be sure to have the electrolyte always replenished to the prescribed level.

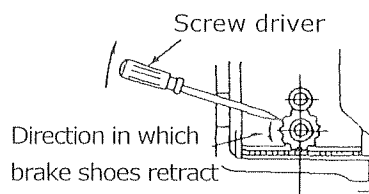
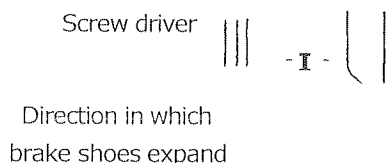
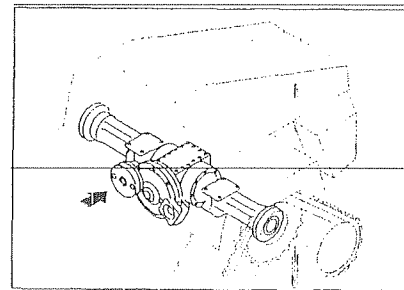
Air cleaner

When the red float of the dust indicator reaches the service level (a mark on the indicator), clean the element (see page 62).



Brake

- (1) Disengage the brake referring to the procedure on page 28.
- (2) Turn the adjusting screw to make the brake shoes contact with the drum.
- (3) From this position, back off the screw 8 notches to provide correct clearance.



(3) Every 250 hours

Engine oil filter

Engine oil pan

\$ See the separate engine manual.

(1) After completion of operation and while the oil is warm, drain the oil with the drain plug **O** removed.

A WARNING
When draining a hot oil, use care not to get burned.

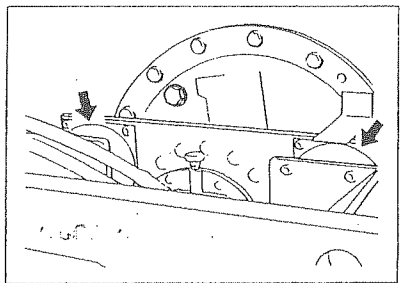
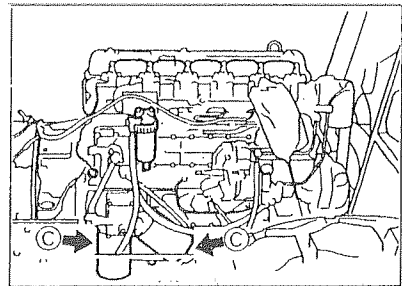
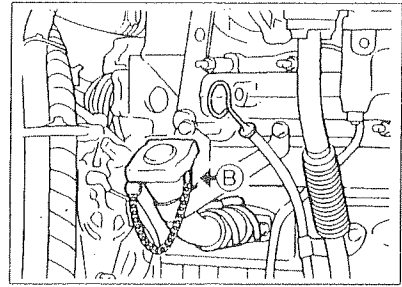
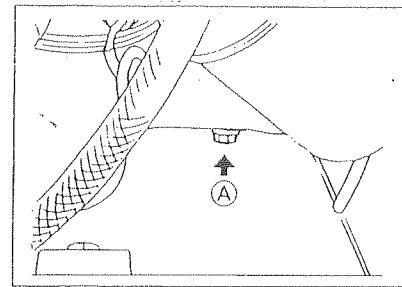
(2) Refit the drain plug **R** and fill the crankcase with the engine oil from the fill hole **R**.

(3) Change the oil filter **C**.

NOTE: For a new machine, change oil at 50 operating hours for the initial time only.

Shockmounts

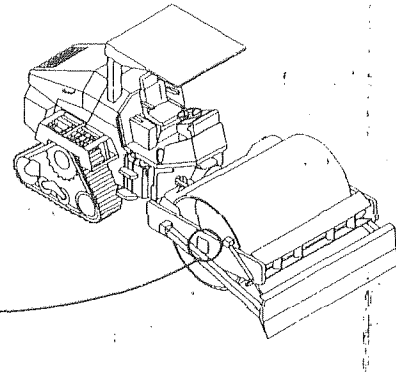
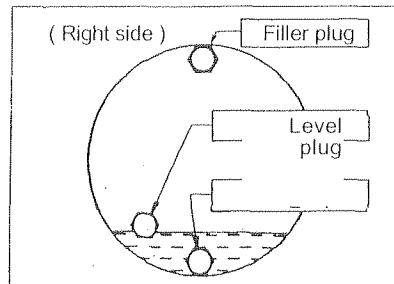
Check the rubber blocks for cracks, and their mounting bolts for looseness.



3. PERIODICAL MAINTENANCE

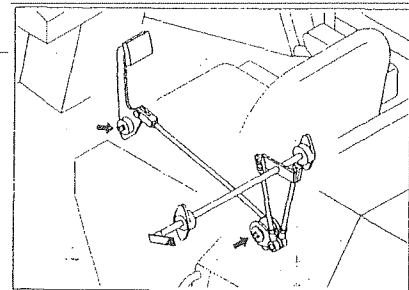
Vibrator

Check for the oil level and



Brake link

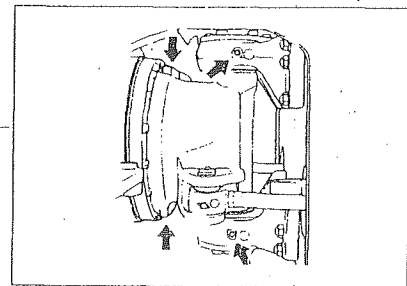
Apply grease to the brake link bracket.



Tilt Bearing

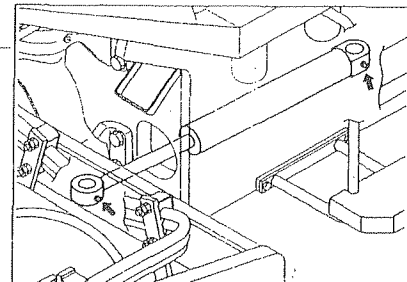
Center pin

Apply grease at 4 locations.



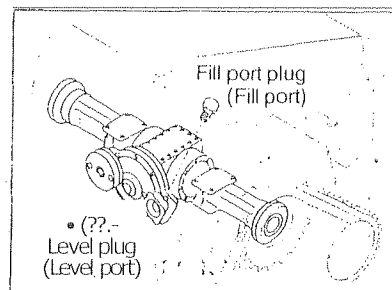
Steering cylinder

Apply grease to the cylinder head pin and piston rod pin.



Rear axle case

Check for oil level, and add oil through the fill port as necessary.



(4) Every 500 hours

Fuel filter

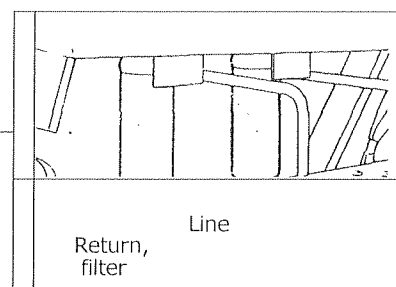
4 See the separate engine manual.

Change the filter cartridge.

Return filter

Line filter

Change the elements.



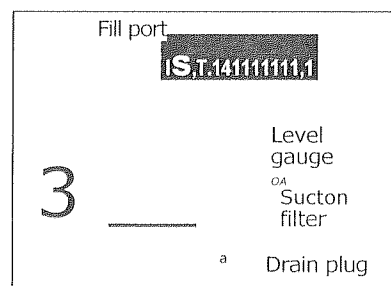
(5) Every 1,000 hours

© Suction filter

Take off the hydraulic tank cover. Take out and clean the strainer, Change the strainer if necessary.

Hydraulic tank

- (1) Remove the drain plug, and drain oil while it is warm.
- (2) Clean inside of the tank, and fill fresh oil to the specified level.
- (3) Start and run the engine at idling for 2 to 5 minutes. When the hydraulic oil has become free from air bubbles, stop the engine and recheck the oil level.



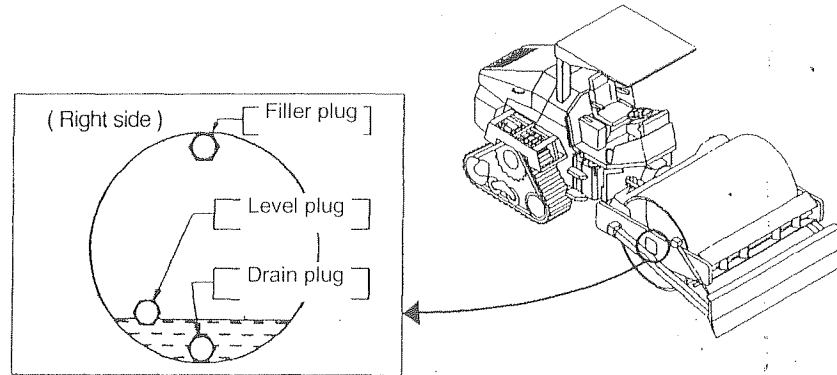
A WARNING

When draining a hot oil, use care not to get burned.

3. PERIODICAL MAINTENANCE

O Vibrator

- (1) Rotate the drum till the drain plug comes to bottom.
- (2) Remove drain plug, level gauge plug and filler plug.
- (3) Drain oil from vibrator.
- (4) Clean the vibrator before reinstalling it.
- (5) Feed oil at filler port until oil flows out of level gauge hole.
- (6) Reinstall the level gauge plug as well as filler plug after cleaning them.



A WARNING

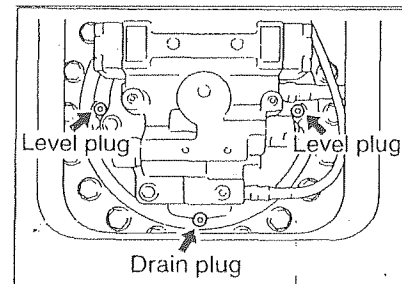
When draining a hot oil, use care not to get burned.

A CAUTION

The oil capacity of the vibrator is 40 liters (CV550DV is 85 liters) each.
Do not fill more than 40 liters (CV550DV is 85 liters).

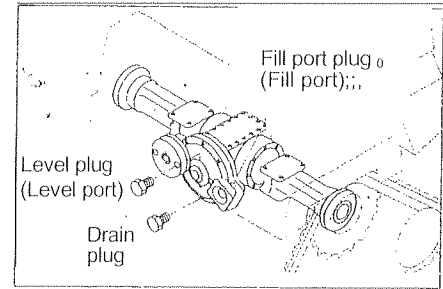
O Gear case / Wheel motor

- (1) Position the drum so that the drain plug comes to the bottom.
- (2) Remove the drain plug and drain the oil while it is warm.
- (3) Rotate the drum so that a drain hole may come to top. Refit the drain plug and fill the oil through the fill hole until it overflows at the level hole.
- (4) Refit the level plug and drain plug.



Rear axle case

- (1) Drain the gear reducer oil by removing the drain Plug..
- (2) Refit the drain plug.
- (3) Take off the level plug and fill port plug.
- (4) Fill oil through the fill port until oil starts overflowing from the level port.
- (5) Refit the level plug and fill port plug.



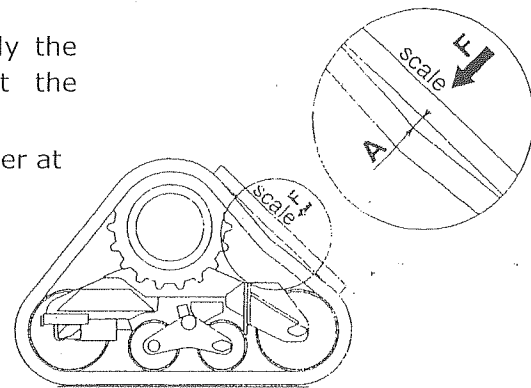
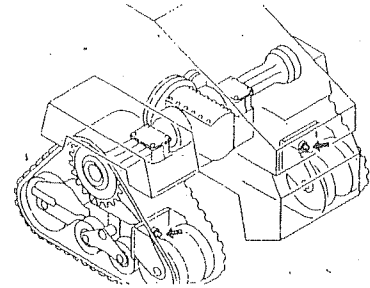
(6) As required

io Crawler

- (1) Check the crawler for wear and damage.
- (2) Check the tension.

= Adjustment of crawler tension =

- (1) Move the machine forward and backward two to three times so that the center of the front wheel will be aligned with the center of the rear wheel.
- (2) Inject grease through the filler hole shown in the figure, and the crawler is stretched.
Loosen the grease nipple in the filler hole to let the grease flow out, and the crawler will be loosened.
- (3) Place a 1-m scale on the crawler, and apply the force of 20 kgf. Make adjustment so that the clearance "A" will be 10 ± 2 mm.
- (4) Make adjustment so that the tension of the crawler at right and left will be the same.



3. PERIODICAL MAINTENANCE

Air cleaner

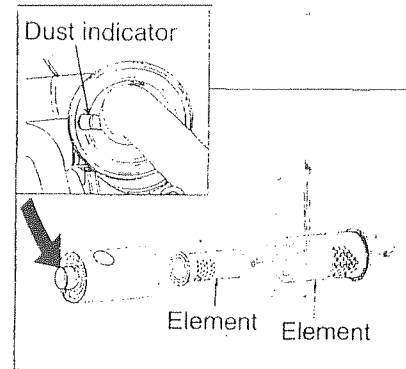
When the red float of the dust indicator reaches the service level (a mark on me indicator), clean the element as described below:

- (1) Remove the butterfly nut and pull out the element.
- (2) Blow compressed air from inside of the element.

A WARNING

Exercise caution not to get a speck of dust in your eye.

- (3) Check the element for any damage and replace as necessary, before pushing the dust indicator reset button.
- (4) Reinstall the element and tighten with butterfly nut.



NOTE: In normal use, change the other element once in every six cleanings.

A CAUTION

Replace the element when the red float reaches the service level even if it is cleaned.

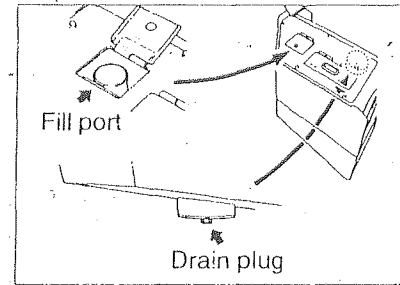
Wheel

Check the wear and damage

12 Fuel tank

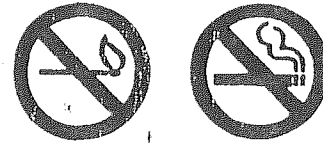
- (1) With the drain plug removed, remove the water and sediment from the bottom of the tank.
- (2) If sedimentation is substantial, remove the drain plug and clean the interior of the tank.
- (3) When the necessary work and refueling are complete, tighten the filler cap positively.

NOTE: When removing the water and sediment from the tank filled with the fuel, the fuel will gush out if the drain plug is screwed out completely.



A WARNING

- The fuel will catch fire if open flames or ignition sources are used close to it.
- Do not smoke or use a match or cigarette lighter close to it.



3.5 Adding Water and Lubricants

1. General rules

- 1) Never add water or lubricant with the strainer removed.
- 2) Use recommended lubricant and hydraulic fluid.
- 3) Do not use lubricants and hydraulic fluid of different brands.
- 4) When replacing oil, drain it completely and clean the container with flushing oil before filling new oil.

2. Capacity

Compartment	Type of fluid	- Capacity in liters (gal.)	
		..CV550D,T	CV550DV
Fuel tank	Diesel oil	250 (66.0)	< _ --
Engine oil pan	Engine oil	13 (3.4)	<----
Hydraulic tank	Hydraulic oil	50 (13.2)	< - -
Wheel motor	Gear oil	3.9 (1.0)	-
Radiator	Coolant	22 (5.8)	-E _----
Vibrator	Gear oil	40 (10.6)	85 (22.5)
Axle case	Gear oil	20 (5.3)

3. PERIODICAL MAINTENANCE

3. Rating

Lubricant	Service „classification	Ambient temp and applicable viscosity rating			Applicable standards
		-15 - 30°C (5 - 86°F) Cold	0 - 40°C (32 - 104°F) Moderate	15 - 55°C (59 - 131°F) Tropical	
Engine oil	API grade CD	SAE 10W-30	SAE 30	SAE 40	MIL-L-2104B
Gear oil	API grade GL4	SAE 80W-90	SAE 90	SAE 140	MIL-L-2105
Hydraulic oil	Wear resistant	ISO-VG32 over VI 140	ISO-VG46 over VI 140	ISO-VG68 over VI 110	ISO-3448
Grease	Lithium type extreme pressure				NLGI-2
Fuel	Diesel oil				ASTM D975-2D

5. Recommended lubricants

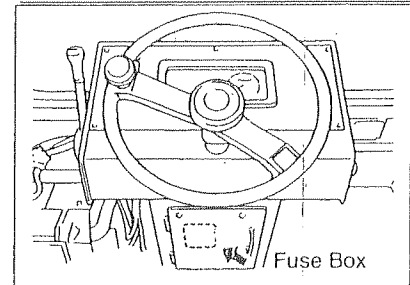
Lubricant Oil company	Engine oil API - CC	Gear oil API GL 4	Hydraulic oil VG 46	Grease (NGr-- II)
CALTEX	RPM DELO 300 oil	Universal Thuban 90	Rando Oil HD 46	Martifack EP 2
BP	BP Vanellus C3-30	BP Gear Oil EP 90	BP Energol HLP 46	BP Energrease i L S - EP 2
ESSO	Esso Lube D3-30	Esso Gear Oil GP 90	' Nuto H 46	Beacon . EP!2
MOBIL	Mobil Delvac 1330	Mobil Pegasus Gear Oil 90	Nuto Oil 25	Beacon EP 25
SHELL	Shell Rotella CT Oil 30	Shell Spirax 90 EP	Shell Tellus Oil 46	Shell Alvania EP Grease 2
CASTROL	Castrol CRD 30	Castrol Hypoy 90	Hyspin ..AWS 46	Spherrol ELP 2

CAUTION: (1) Fill the fluid reservoirs with the filters installed.
(2) Use recommended fuels and lubricants only.

3. PERIODICAL MAINTENANCE

Fuse box

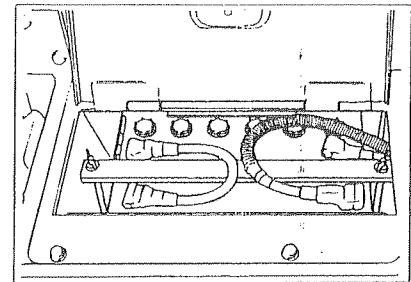
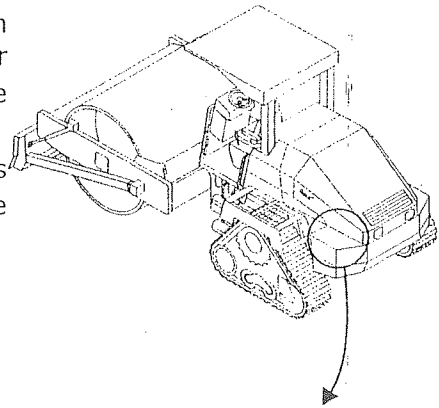
The fuse box houses five 15A-fuses, and five 20A-fuses lined up with spares fitted for 15A- and 20A-fuses. Use fuses of correct capacity. See page 26.



NOTE: When a fuse is burned, determine the cause before replacing.

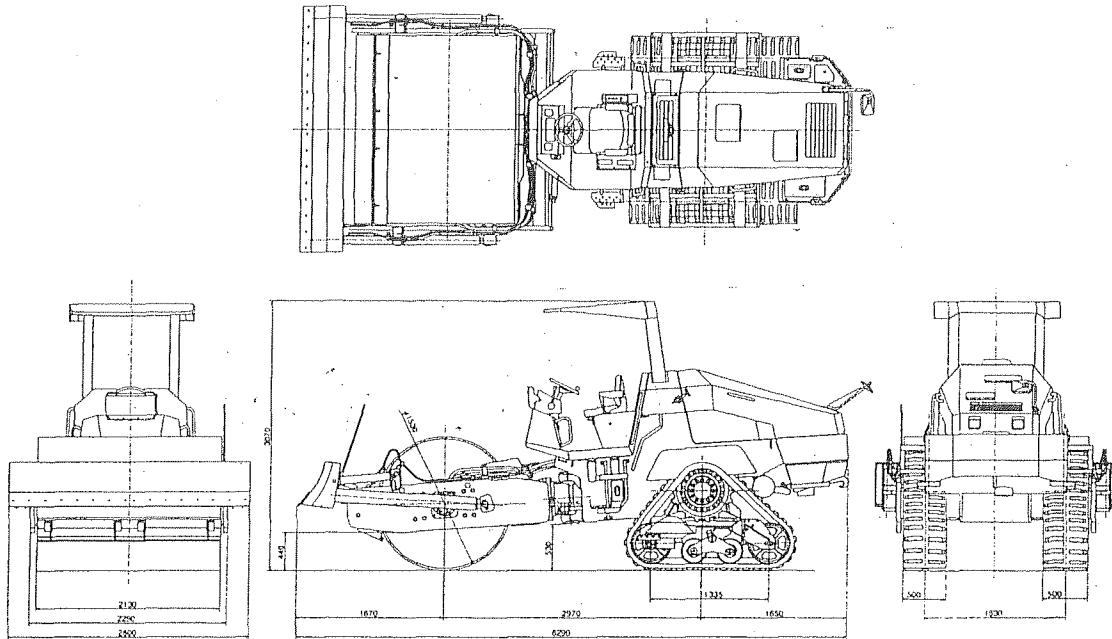
Battery

- * Leaving the battery unused for long without attention or using its power excessively at a time can cause damage to the plates, leading to a shortened life.
- * For long-term storage, charge it fully, tighten the caps securely, store in a cool and dry place, and check the level of charge at least once a month.
- * Maintain the level of charge above 75%.
- * In cold weather, it is desirable to start the engine with the battery charged 100%. Do not try to start the engine with less than 75%.



4. SPECIFICATIONS

CV550D

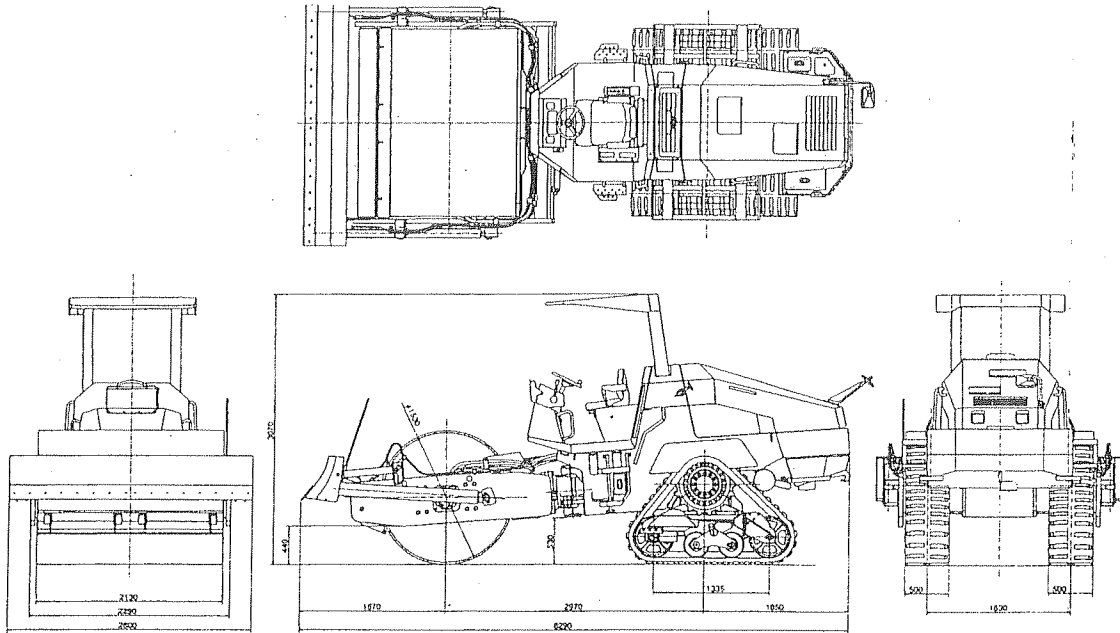


Model	CV550D	Vibrating power:	Low	High
Weight:		Frequency	40 Hz {2,400 vpm}	30 Hz {1,800 vpm}
Gross weight	13,700 kg (30,210lbs)	Centrifugal force	172 kN (38,580 Ibs)	226 kN (50,710 Ibs)
On front axle	6,400 kg (14,110lbs)		{17,500kgf}	{23,000kgf}
On rear axle	7,300 kg (16,100lbs)	Gradability	62% (32°)	
Dimension:		Rolling width	2,130 mm (84")	
Overall length	6,290 mm (248")	Minimum turning radius	6.2 m (244")	
Overall width	2,800 mm (110")	Engine:		
Overall height	3,070 mm (121")	Model	ISUZU "BB-6BG1T" Diesel Engine	
Wheelbase	2,970 mm (117")		-with turbo charger	
Wheel		Total displacement	6,494 litres (396 cu.in) {6,494 cc}	
Front	Roll (dia. x width)	Rated output	126kW {171ps} / 2,200min' {rpm}	
	1,530 x 2,130 mm (60" x 84")		(169 HP/2,200 rpm)	
Rear	Crawler (pitch x width)	Max. torque	559 N' m/1,800 min" {rpm}	
	125 x 500 mm		(412 ft • lb/1,800 rpm)	
Performance:		Tank capacity:		
Travel speed		Fuel tank	250 litres (66 gal)	
	Low 0 -3.0 km/h (0 - 1.9 mile/h)	Hvdraulic oil tank	50 litres (13 gal)	
	High 0 -5.3 km/h (0 - 3.3 mile/h)			

NOTE: Gradability is the calculated value. It may vary with ground surface conditions.

4. SPECIFICATIONS

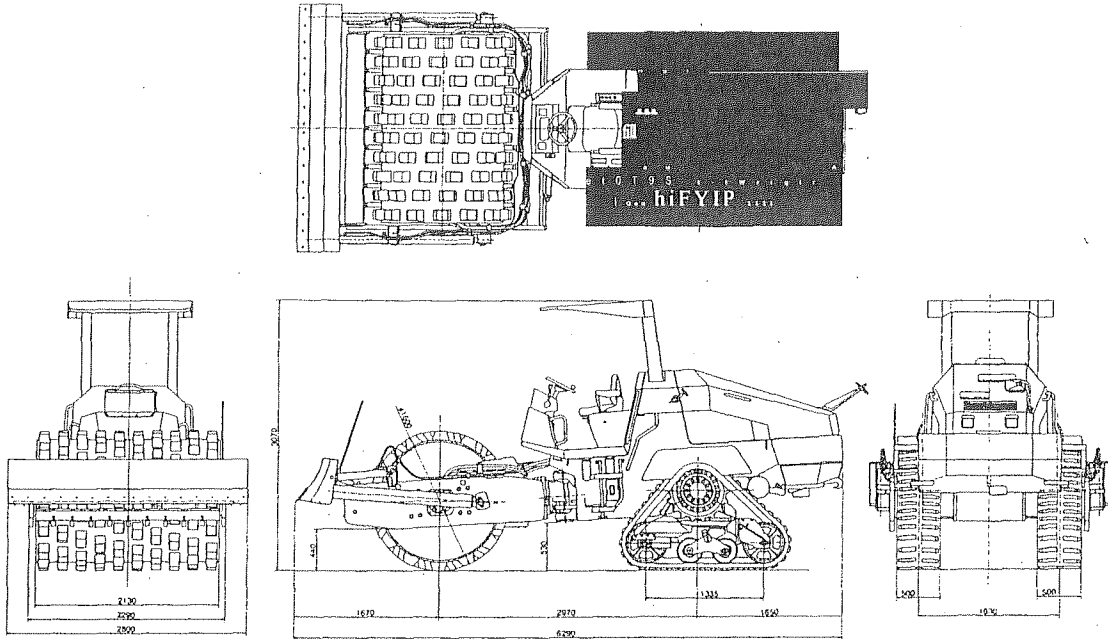
CV550DV



Model	CV550DV	Vibrating power:	Low	High
Weight:		Frequency	40 Hz {2,400 vpm}	30 Hz {1,800 vpm}
Gross weight	14,200 kg (31,310lbs)	Centrifugal force	196 kN (44,090 lbs)	275 kN (61,730 lbs)
On front axle	6,900 kg (15,210lbs)		{20,000kgf}	{28,000kgf}
On rear axle	7,300 kg (16,100lbs)	Gradability	62% (32°)	
Dimension:		Rolling width	2,130 mm (84")	
Overall length	6,290 mm (248")	Minimum turning radius	6.2 m (244")	
Overall width	2,800 mm (110")	Engine:		
Overall height	3,070 mm (121")	Model	ISUZU "BB-6BG1T" Diesel Engine with turbo charger	
Wheelbase	2,970 mm (117")	Total displacement	6.494 litres (396 cu.in) {6,494 cc}	
Wheel		Rated output	126kW (171ps) / 2,200miT ⁻¹ {rpm}	
Front	Roll (dia. x width) 1,530 x 2,130 mm (60" x 84")	Max. torque	559 N- rh/1,800 min ⁻¹ {rpm}	
Rear	Crawler (pitch x width) 125 x 500 mm		(412 ft-lb/1,800 rpm)	
Performance:		Tank capacity:	III	
Travel speed		Fuel tank	250 litres (66 gal)	
	Low 0 -3.0 km/h (0 - 1.9 mile/h)	Hydraulic oil tank	50 litres (13 gal)	
	High 0 -5.3 km/h (0 - 3.3 mile/h)			

NOTE: Gradability is the calculated value. It may vary with ground surface conditions.

CV550T



Model	CV550DT	Vibrating power:	Low	High
Weight:		Frequency	40 Hz {2,400 vpm}	30 Hz {1,800
Gross weight	14,050 kg (30,980lbs)	Centrifugal force	kN (40,790 lbs)	245 kN (55,120
On front axle	6,750 kg (14,880lbs)		{18,500kgf}	{25,000kgf}
On rear axle	7,300 kg (16,100lbs)	Gradability	62% (32*)	
Dimension:		Rollina width	2.130 mm (84")	
Overall length	6,290 mm (248")	Minimum turning radius	6.2 m (244")	
Overall width	2,800 mm (110")	Engine:		
Overall height	3,070 mm (121")	Model	ISUZU "BB-6BG1T" Diesel Engine	
Wheelbase	2,970 mm (117")		with turbo charger	
Wheel		Total displacement	6.494 litres (396 cu.in) {6,494 cc}	
Front	Roll (dia. x width)	Rated output	126kW (171ps) / 2,200min" {rpm}	
	1,530 x 2,130 mm (63" x 84")		(169 HP/2,200 rpm)	
Rear	Crawler (pitch x width)	Max. torque	559 N' m/1,800 min' {rpm}	
	125 x 500 mm		(412 ft-lb/1,800 rpm)	
Performance:		Tank capacity:		
Travel speed		Fuel tank	250 litres (66 gal)	
	Low 0-3.0 km/h (0-1.9 mile/h)	Hydraulic oil tank	50 litres (13 gal)	
	High 0-5.3 km/h (0-3.3 mile/h)			

NOTE: Gradability is the calculated value. It may vary with ground surface conditions.

SAKAI HEAVY INDUSTRIES, LTD.

Head Office: 1-4-8, Shiba Daimon, Minato-ku,
Tokyo, Japan

Telephone: Tokyo (03) 3431-9971

Facsimile: (03) 3436-6212

SAKAI HEAVY INDUSTRIES, LTD.